



Vertical Multistage Centrifugal Pump

50Hz

CF Series

1, 3, 5, 10, 15, 16, 20, 32, 45, 64, 90, 120, 150, 200

VSD Booster Pumping System



General Introduction:

Features

CF Series Stainless Steel Vertical Multistage Centrifugal Pump is kind of non-self priming vertical multistage centrifugal pumps, which adopts classical vertical electric motor and assembly mechanical seal. It possesses many advantages, such as small volume, light weight, low noise, easy maintenance, elegant appearance etc.

CF Series widely used in the areas of daily life, general industry, wash system, Boiler system, hot water circulation system, Heating system, fire fighting system, air-cool system, Irrigation system, pressure boosting system, water treatment system, Handling of water, free of suspended solids, in the civil, industrial and agricultural sectors..

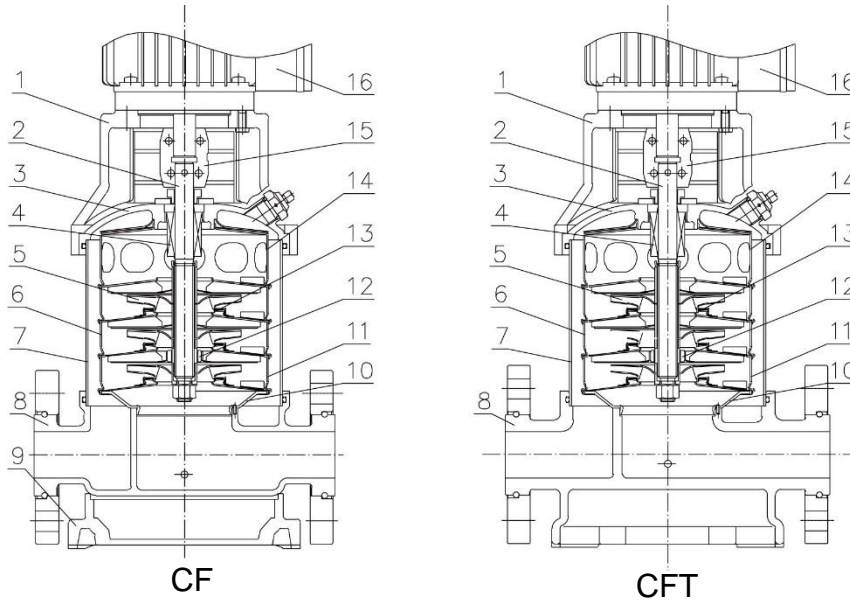
Pumps:

- Delivery: up to 0.6-260 m³/h.
- Head: up to 323 m.
- Temperature of pumped liquid: from -15°C to +105°C for standard version.
- Vertical and compact structure, inlet and outlet flanges are located at the same central line, small area occupation and easy installation.
- Assembly mechanical seal, making installation and maintenance safer and more convenient and guarantee the reliability of the mechanical seal.
- Wet parts are made of stainless steel, which will not contaminate medium and process lengthy service life and elegant appearance.
- Electric motor shaft directly and accurately connects with pump shaft through coupling.
- Low noise and less vibration.
- Standardized design and outstanding universality.

Motor:

- Protection class : IP55
- Insulation class: F
- Standard voltage: Single Phase 1x220-230/240V 50Hz
Three Phase 3x 200V-240/380-415V 50Hz
Three Phase 3x380-415V/660-690V 50Hz for power above 3kw

Pump Cross Section:

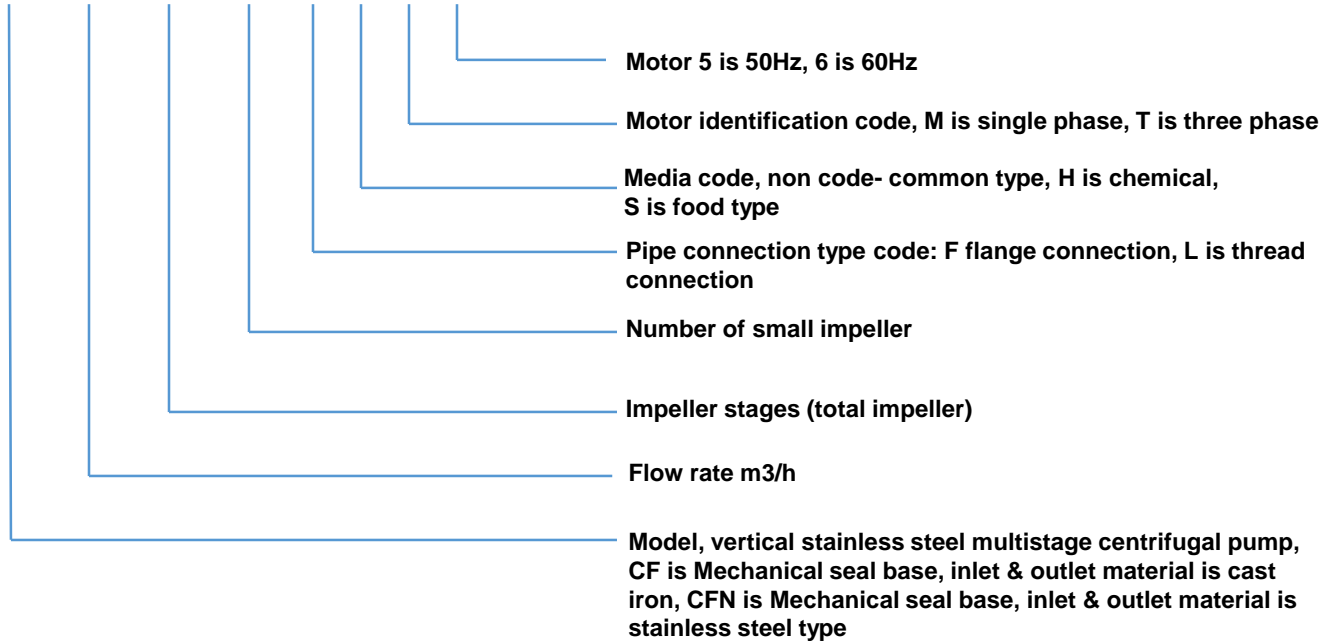


Pump Material:

No	Name	Material	
1	Electric Motor Base	HT200	
2	Pump Shaft	OCr18Ni9	
3	Mechanical Seal Base	CF	ZGOCr18Ni9
		CF 64 and below	HT200
		CF 90 and above	QT600-3
4	Mechanical Seal	Subassembly	
5	Impeller	CF 90 and below	OCr18Ni9
		CF120 and above	ZGOCr18Ni9
6	Diffuser	CF 90 and below	OCr18Ni9
		CF120 and above	ZGOCr18Ni9
7	Cylinder	OCr18Ni9	
8	Inlet & Outlet	CF	ZGOCr18Ni9
9	Pump Body	CF 8 and below	HT200
		CF 12 and above	QT600-3
10	Base Plate	CF	HT200
11	Inducer	OCr18Ni9	
12	Diffuser with Bearing	OCr18Ni9	
13	Sliding Bearing	YG6	
14	Seal Ring	F-4	
15	Top Diffuser	OCr18Ni9	
16	Coupling	ZG25	
17	Motor	Subassembly	

Model Identification:

CF 64 - 8 / 1 F S T 5



Transport Media:

- Liquid Temperature : -15 ~ +105 Degree
- Transport light, clean, non-inflammable or explosive medium without any solid particles or fibers.
- CF is transport mildly corrosive media & CFT is transport non-corrosive media.

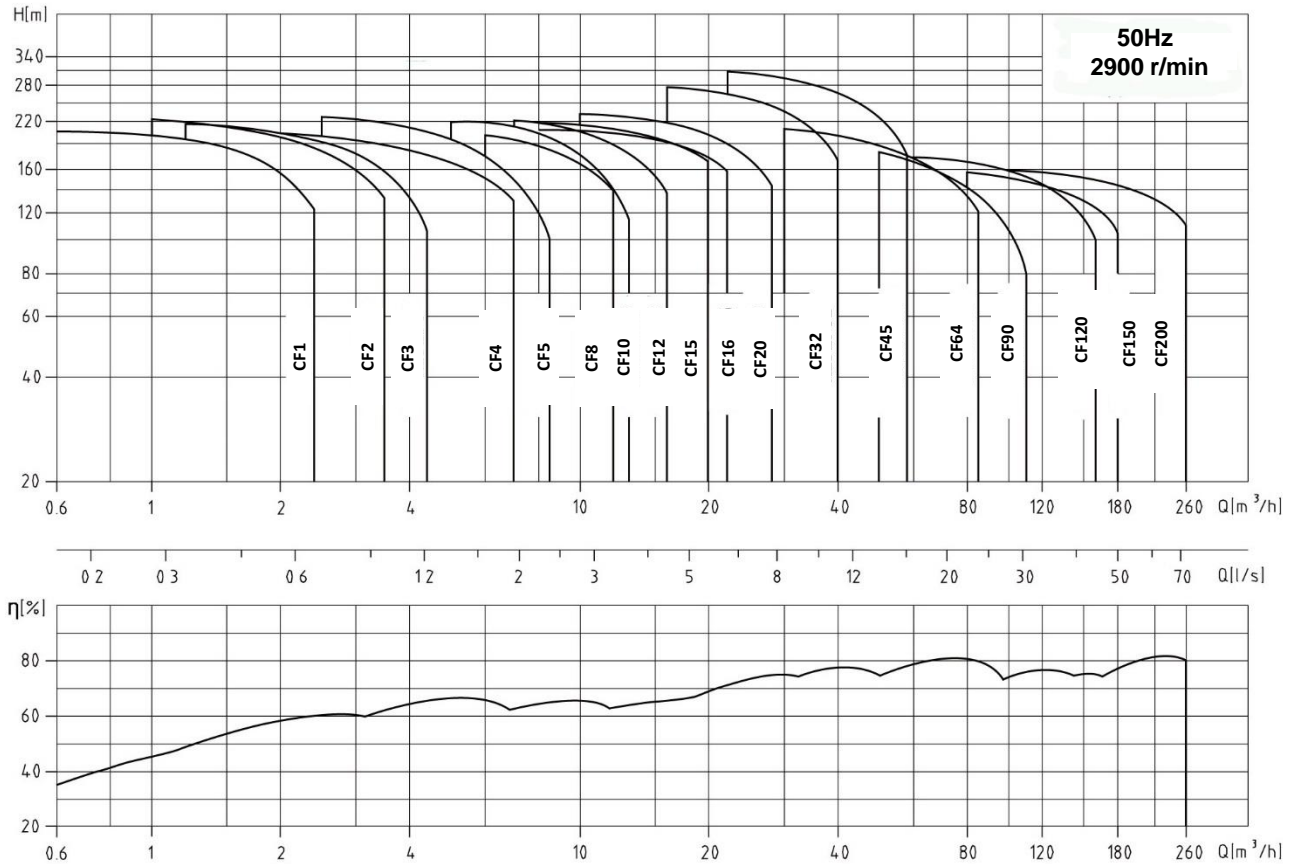
Scope of application:

- Water supply: water transportation in water plants, boosting system in high rise building etc
- Industrial liquid transportation: air-condition system, boiler water supply and machine associate purpose etc.
- Irrigation: farmland irrigation, spray irrigation and dripping irrigation.

General Characteristic Operation:

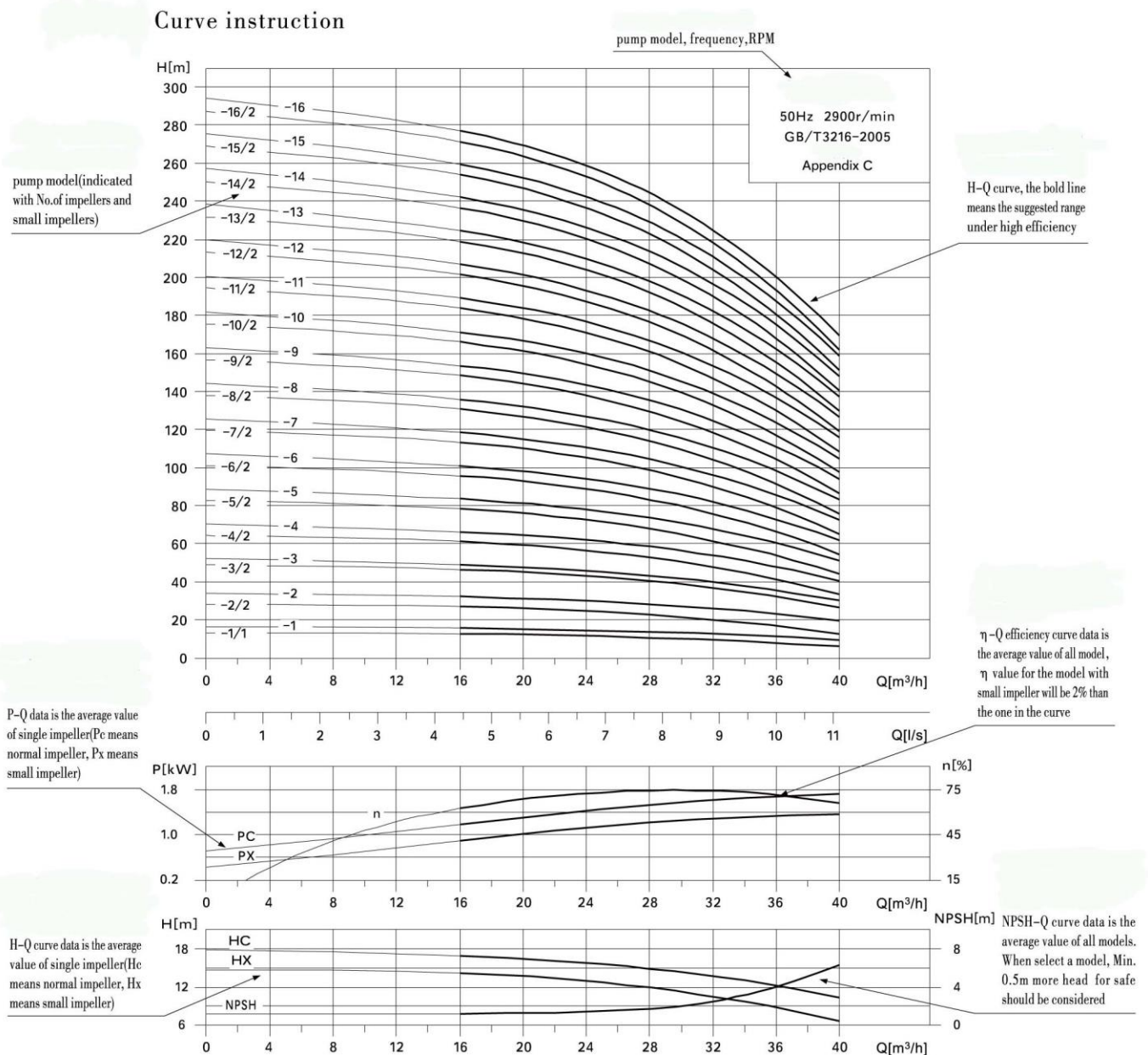
Model	CF 1	CF 2	CF 3	CF 4	CF 5	CF 8	CF 10	CF 12	CF 15	CF 16	CF 20	CF 32	CF 45	CF 64	CF9 0	CF 120	CF 150	CF 200
Flow rate m ³ /h	1	2	3	4	5	8	10	12	15	16	20	32	45	64	90	120	150	200
Application flow rate m ³ /h	0.6 - 2.4	1 - 3.5	1.2 - 4.4	2-7	2.5 - 8.5	6 - 12	5 - 13	7 - 16	8 - 20	8 - 22	10 - 28	16 - 40	22 - 58	30 - 85	50 - 110	60 - 160	80 - 180	100 - 260
Max Head meter	216	236	225	213	242	217	219	239	229	217	250	294	323	224	218	181	206	168
RPM	2 P	2 P	2 P	2 P	2 P	2 P	2 P	2 P	2 P	2 P	2 P	2 P	2 P	2 P	2 P	2 P	2 P	2 P
Max efficiency	50	47.5	60	58	67.5	63	65.5	63	66	67.5	66	75	78	79	81.5	76.5	75	81.5
Motor power	0.37 -2.2	0.37 -3	0.37 -3	0.37 -4	0.37 -5.5	0.75 -7.5	0.37 -7.5	1.5- 11	1.1- 15	2.2- 15	1.1- 18.5	1.5- 30	3-45	4-45	5.5-45	11-75	11-75	18.5- 110
Flange Diameter	25	25	25	32	32	40	40	50	50	50	50	65	80	100	100	125	125	150

Performance Range:

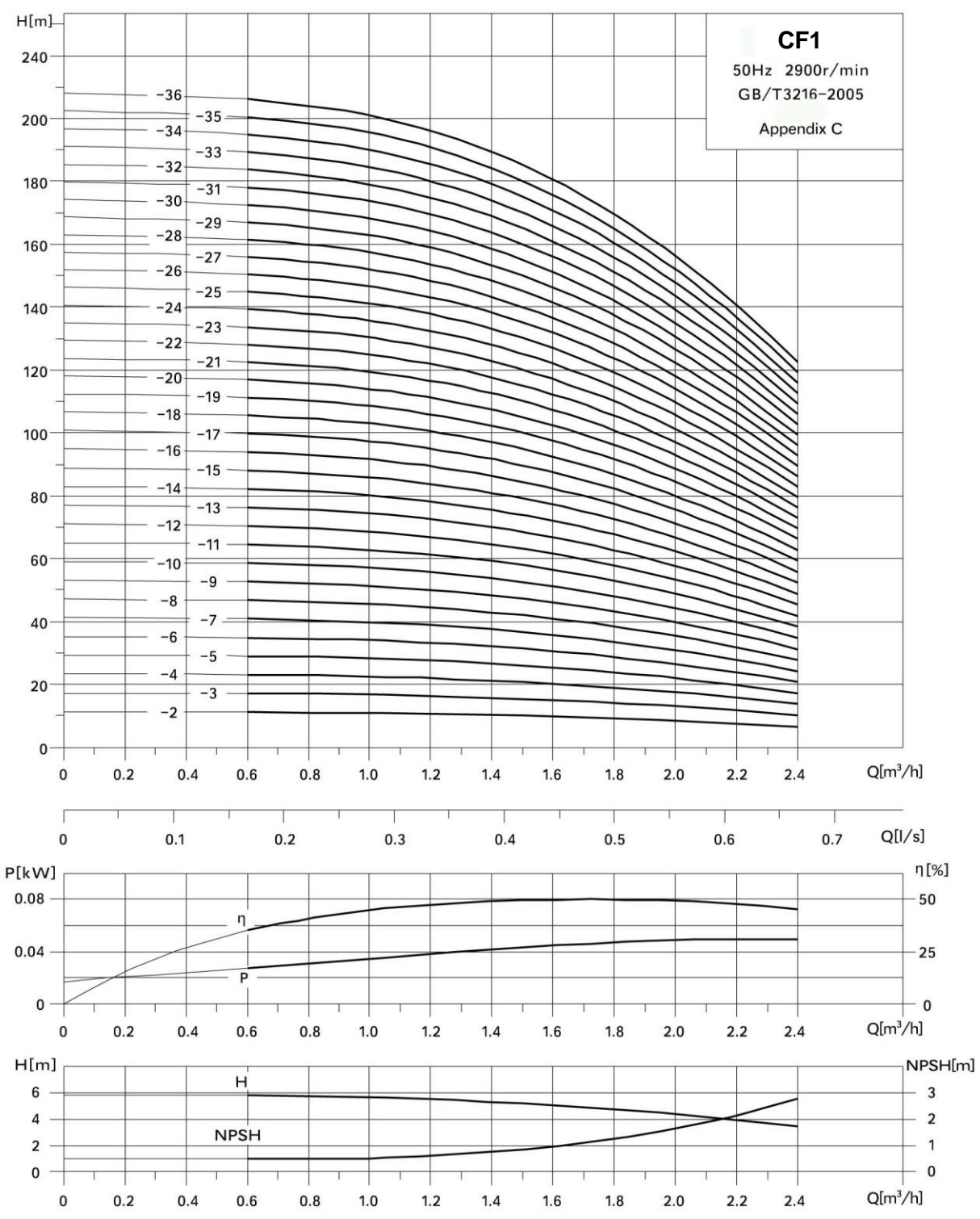


Curve Instruction:

- Curve tolerance meet the requirement of GB/T3216-2005, see Appendix C.
- Test media is water at normal temperature, without air.
- When select a pump, please refer to suggested the bold part of the curve, in case any dangers due to too small or big flow.



Performance Curve:



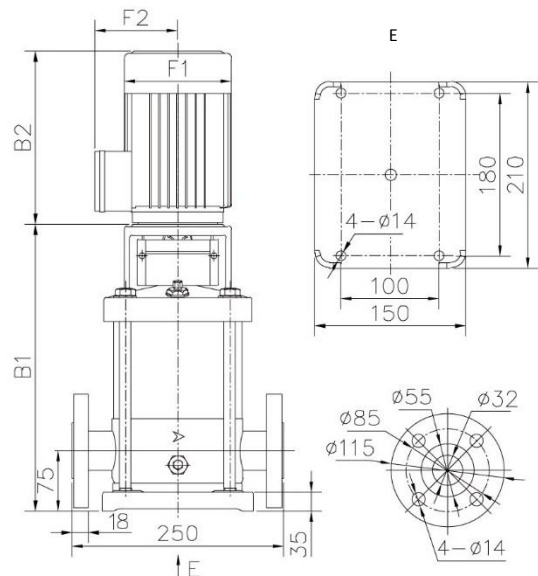
Performance data

Pump model	motor kW	flow m ³ /h	head m									
			0.6	0.8	1.0	1.2	1.4	1.6	1.8	2.0	2.2	2.4
CF1	-2	0.37	11	11	11	10.5	10	9.5	9	8.5	7.5	6.5
	-3	0.37	17	17	16.5	16	15.5	15	14	13	11.5	10
	-4	0.37	23	23	22.5	22	21	20	19	17.5	15.5	13.5
	-5	0.37	29	28.5	28	27.5	26.5	25.5	24	22	19.5	17
	-6	0.37	35	34.5	34	33	32	30.5	28.5	26.5	23.5	20.5
	-7	0.37	40.5	40.5	39.5	38.5	37.5	35.5	33.5	31	27.5	24
	-8	0.55	46.5	46	45.5	44.5	43	41	38.5	35.5	32	27.5
	-9	0.55	53	52	51	50	48	46	43	40	36	31
	-10	0.55	59	58	57	56	54	51	48	44	40	34.5
	-11	0.55	64	64	63	61	59	56	53	48.5	44	38
	-12	0.75	70	70	69	67	65	62	58	53	48	41.5
	-13	0.75	76	76	74	73	70	67	63	58	52	45
	-14	0.75	82	81	80	78	75	72	68	62	56	48.5
	-15	0.75	88	87	86	84	81	77	72	67	60	52
	-16	1.1	94	93	92	89	86	82	77	71	64	56
	-17	1.1	100	99	97	95	92	87	82	76	68	59
	-18	1.1	106	105	103	100	97	92	87	80	72	63
	-19	1.1	111	110	109	106	102	97	92	84	76	66
	-20	1.1	117	116	114	111	107	102	96	89	80	69
	-21	1.1	123	121	119	117	113	107	101	93	84	73
	-22	1.1	128	127	125	122	118	112	105	97	87	76
	-23	1.1	134	132	130	127	123	117	110	101	91	79
	-24	1.5	139	138	136	133	128	122	115	106	95	83
	-25	1.5	145	143	141	138	133	127	119	110	99	86
	-26	1.5	150	149	147	143	138	132	124	114	103	89
	-27	1.5	156	154	152	148	143	137	128	118	106	93
	-28	1.5	161	160	157	154	148	141	133	122	110	96
	-29	1.5	167	165	163	159	153	146	137	127	114	99
	-30	1.5	173	171	168	164	159	151	142	131	118	103
	-31	2.2	178	176	174	169	164	156	147	135	121	106
	-32	2.2	184	182	179	175	169	161	151	139	125	109
	-33	2.2	189	187	185	180	174	166	156	143	129	113
	-34	2.2	195	193	190	185	179	171	160	148	133	116
	-35	2.2	201	199	196	191	184	176	165	152	137	119
	-36	2.2	206	204	201	196	189	181	170	156	141	122

Dimension and weight

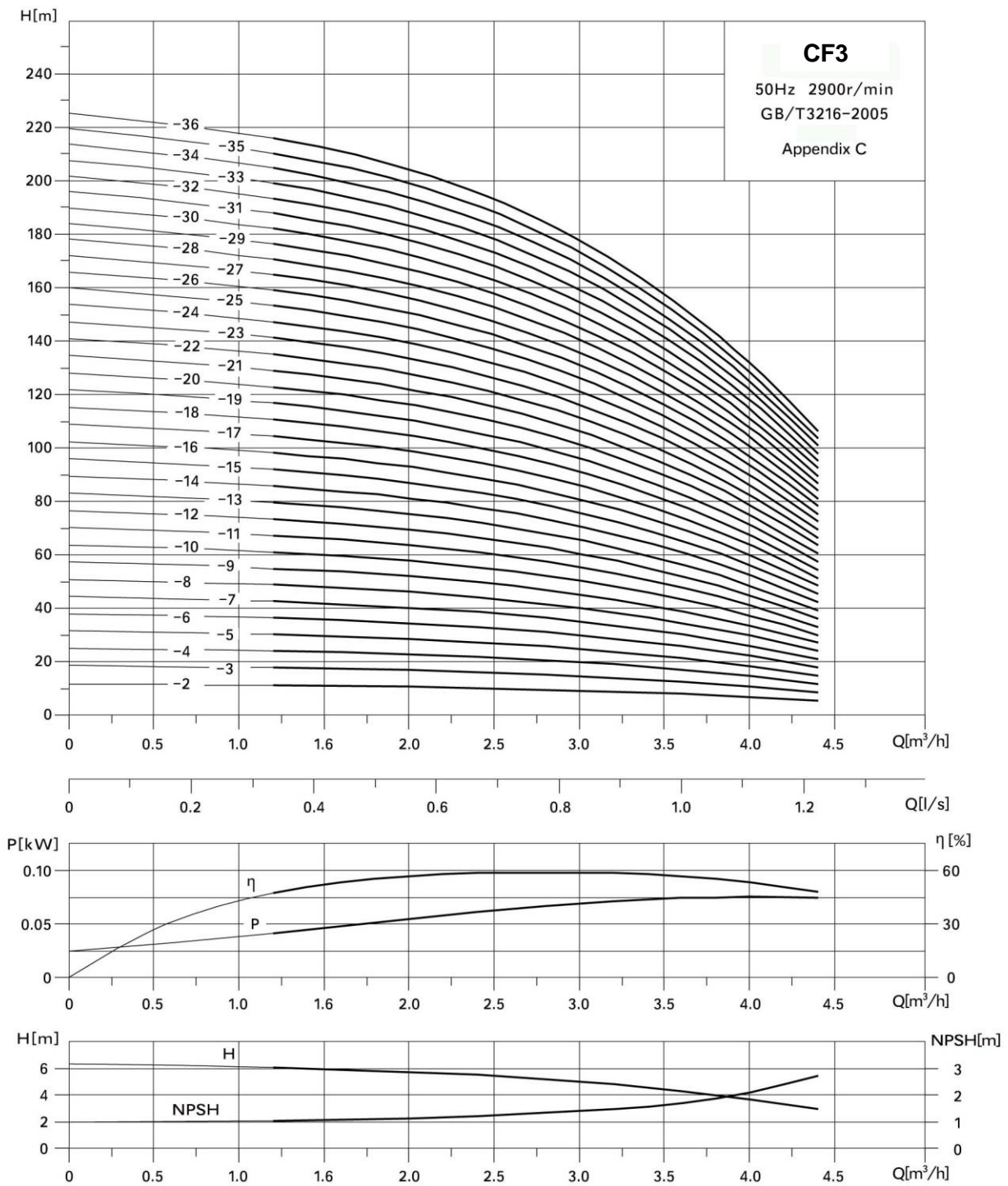
Pump model	Dimension mm						weight kg	
	B1	B2	B1+B2	F1	F2	DBL	DBLT	
CF1	-2	257	215	472	140	119	20	21
	-3	275	215	490	140	119	20	21
	-4	293	215	508	140	119	21	21
	-5	311	215	526	140	119	21	22
	-6	329	215	544	140	119	22	22
	-7	347	215	562	140	119	22	23
	-8	365	215	580	140	119	25	25
	-9	383	215	598	140	119	25	26
	-10	401	215	616	140	119	26	26
	-11	419	215	634	140	119	26	26
	-12	446	244	690	151	125	27	27
	-13	464	244	708	151	125	27	28
	-14	482	244	726	151	125	27	28
	-15	500	244	744	151	125	28	28
	-16	518	244	762	151	125	29	30
	-17	536	244	780	151	125	30	30
	-18	554	244	798	151	125	30	31
	-19	572	244	816	151	125	31	31
	-20	590	244	834	151	125	31	32
	-21	608	244	852	151	125	31	32
	-22	626	244	870	151	125	32	32
	-23	644	244	888	151	125	32	33
	-24	673	287	960	171	138	38	38
	-25	691	287	978	171	138	38	39
	-26	709	287	996	171	138	39	39
	-27	729	287	1014	171	138	39	40
	-28	745	287	1032	171	138	40	40
	-29	763	287	1050	171	138	40	40
	-30	781	287	1068	171	138	40	41
	-31	799	287	1086	171	138	43	44
	-32	817	287	1104	171	138	44	44
	-33	835	287	1122	171	138	44	45
	-34	853	287	1140	171	138	45	45
	-35	871	287	1158	171	138	45	46
	-36	889	287	1176	171	138	45	46

Installation sketch



Flange (DN 32mm) PN16

Performance Curve:



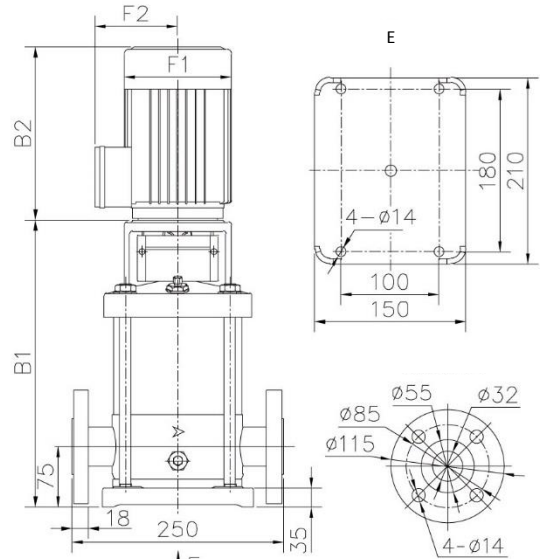
Performance data

Pump model	motor kW	flow m ³ /h	1.2	1.5	2.0	2.5	3.0	3.5	4.0	4.4
CF3	-2	0.37	11	11	10.5	10	9	8	7	5.5
	-3	0.37	17.5	17.5	17	16	14.5	13	11	8.5
	-4	0.37	24	23.5	22.5	21.5	20	17.5	14.5	12
	-5	0.37	30	29.5	28.5	27	25	22	18.5	15
	-6	0.55	36.5	36	34.5	32.5	30	26.5	22	18
	-7	0.55	42.5	42	40.5	38	35	31	26	21
	-8	0.75	48.5	48	46	43.5	40	35.5	29.5	24
	-9	0.75	55	54	52	49	45	40	33.5	27
	-10	0.75	61	60	58	55	50	44.5	37.5	30
	-11	1.1	67	66	64	60	55	49	41	33
	-12	1.1	74	72	70	66	61	54	45	36
	-13	1.1	80	78	75	71	66	58	48.5	39
	-14	1.1	86	84	81	77	71	63	52	42
	-15	1.1	92	91	87	82	76	67	56	45
	-16	1.5	98	97	93	88	81	72	60	48
	-17	1.5	104	103	99	93	86	76	64	51
	-18	1.5	111	109	105	99	91	81	68	54
	-19	1.5	117	115	110	104	96	85	71	57
	-20	2.2	123	121	116	110	101	90	75	60
	-21	2.2	129	127	122	115	106	94	79	63
	-22	2.2	135	133	128	121	111	99	83	66
	-23	2.2	141	139	134	126	116	103	86	69
	-24	2.2	147	145	139	132	121	108	90	72
	-25	2.2	153	151	145	137	126	112	94	75
	-26	2.2	159	156	151	142	131	116	97	78
	-27	2.2	165	162	156	147	136	120	101	81
	-28	2.2	171	168	161	153	141	125	104	84
	-29	2.2	176	173	167	158	145	129	108	87
	-30	3	182	179	172	163	150	133	111	90
	-31	3	188	185	178	168	155	137	115	92
	-32	3	193	190	183	173	159	141	118	95
	-33	3	199	196	188	178	164	145	122	98
	-34	3	205	201	194	183	169	150	125	101
	-35	3	210	207	199	188	173	154	128	103
	-36	3	216	212	204	193	178	158	132	106

Dimension and weight

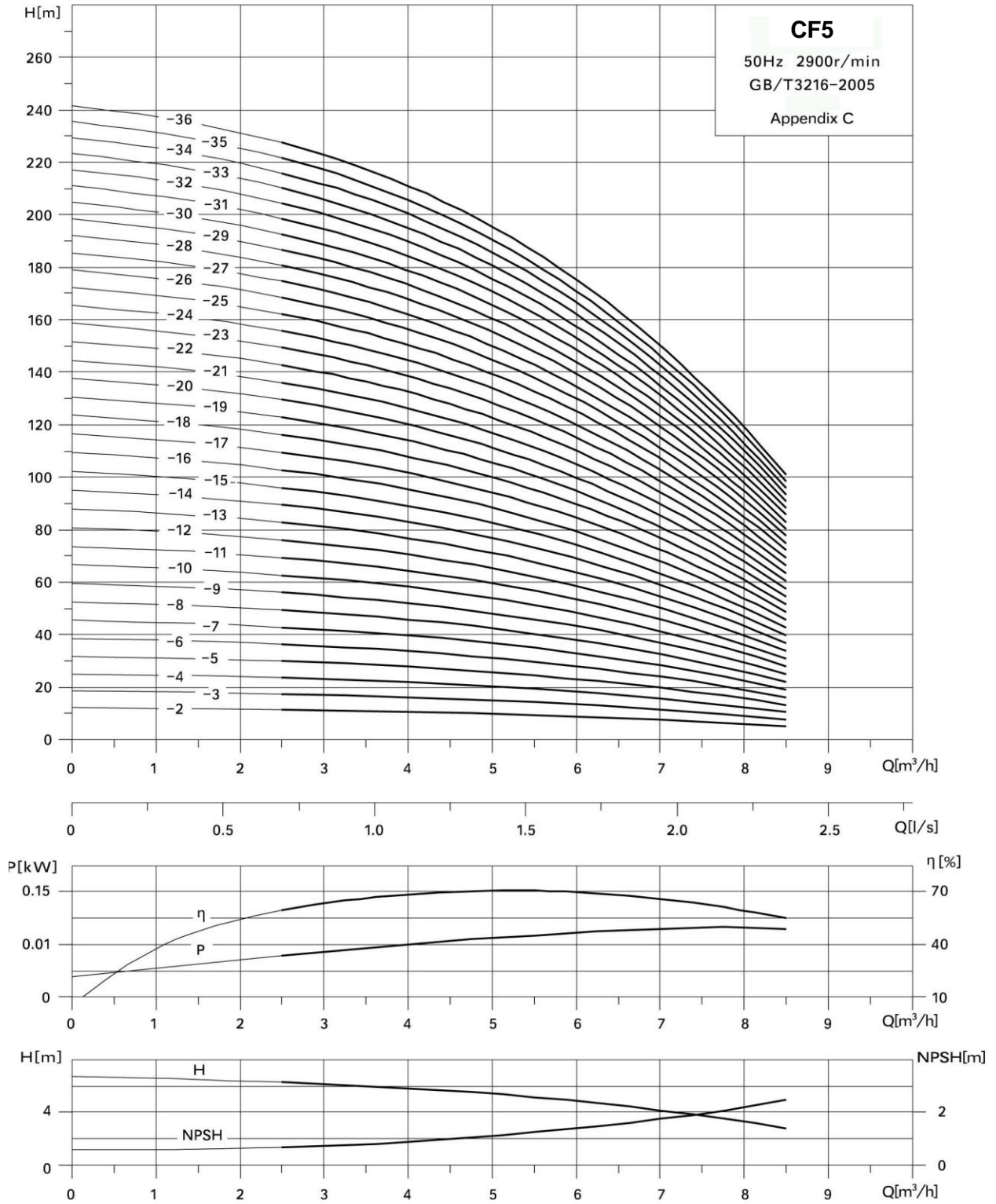
Pump model	Dimension mm						weight kg	
	B1	B2	B1+B2	F1	F2	DBL	DBLT	
CF3	-2	257	215	472	140	119	20	21
	-3	275	215	490	140	119	20	21
	-4	293	215	508	140	119	21	21
	-5	311	215	526	140	119	21	22
	-6	329	215	544	140	119	24	24
	-7	347	215	562	140	119	24	25
	-8	367	244	611	151	125	25	26
	-9	385	244	629	151	125	25	26
	-10	403	244	647	151	125	26	26
	-11	421	244	665	151	125	27	28
	-12	439	244	683	151	125	28	28
	-13	457	244	701	151	125	28	29
	-14	475	244	719	151	125	29	29
	-15	493	244	737	151	125	29	30
	-16	521	287	808	171	138	35	35
	-17	539	287	826	171	138	35	36
	-18	557	287	844	171	138	35	36
	-19	575	287	862	171	138	36	36
	-20	593	287	880	171	138	39	39
	-21	611	287	898	171	138	39	40
	-22	629	287	916	171	138	40	40
	-23	647	287	934	171	138	40	41
	-24	665	287	952	171	138	41	41
	-25	683	287	970	171	138	41	42
	-26	701	287	988	171	138	41	42
	-27	719	287	1006	171	138	42	42
	-28	737	287	1024	171	138	42	43
	-29	755	287	1042	171	138	43	43
	-30	784	337	1121	196	150	50	51
	-31	802	337	1139	196	150	51	51
	-32	820	337	1157	196	150	51	52
	-33	838	337	1175	196	150	52	52
	-34	856	337	1193	196	150	52	53
	-35	874	337	1211	196	150	53	53
	-36	892	337	1229	196	150	53	53

Installation sketch



Flange (DN 32mm) PN16

Performance Curve:



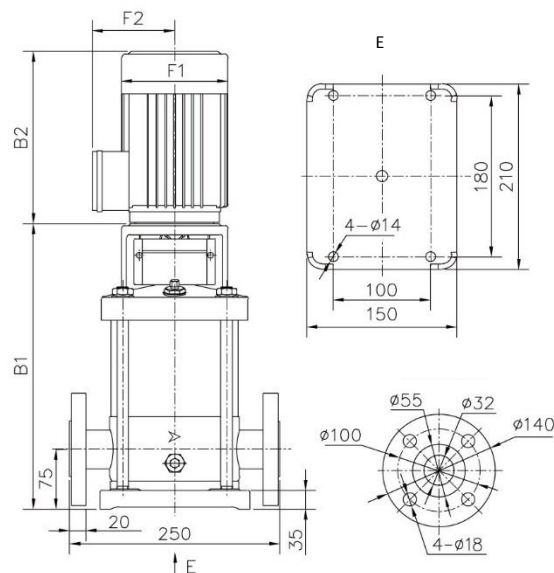
Performance data

Pump model	motor kW	flow m ³ /h	2.5	3.0	4.0	5.0	6.0	7.0	8.0	8.5
			head m							
CFS	-2	0.37	11.5	11	10.5	10	9	7.5	6	5
	-3	0.55	17.5	17	16	15	13.5	11.5	9	7.5
	-4	0.55	23.5	23	22	20	18	15.5	12.5	10.5
	-5	0.75	30	29	27.5	25.5	23	19.5	15.5	13
	-6	0.75	36.5	35.5	33.5	31	28	24	19	16
	-7	1.1	42.5	42	39.5	36.5	33	28	22.5	19
	-8	1.1	49.5	48.5	46	42.5	38	32.5	26	22
	-9	1.5	56	55	52	48	43	37	29	25
	-10	1.5	63	61	58	54	48.5	41.5	32.5	28
	-11	2.2	69	68	64	60	53	45.5	36	30.5
	-12	2.2	76	74	71	65	59	50	39.5	33.5
	-13	2.2	83	81	77	71	64	55	43	36.5
	-14	2.2	89	88	83	77	69	59	46.5	39.5
	-15	2.2	96	94	89	83	74	63	50	42.5
	-16	2.2	103	101	95	88	79	68	54	45.5
	-17	3	110	107	102	94	85	72	57	48.5
	-18	3	116	114	108	100	90	77	61	52
	-19	3	123	120	114	106	95	81	64	55
	-20	3	129	127	120	111	100	86	68	58
	-21	4	136	133	126	117	105	90	71	60
	-22	4	143	140	132	123	110	94	75	63
	-23	4	149	146	139	128	115	99	78	66
	-24	4	156	153	145	134	120	103	81	69
	-25	4	162	159	150	139	125	107	85	72
	-26	4	168	165	156	145	130	111	88	75
	-27	4	175	171	162	150	135	115	91	78
	-28	4	181	177	168	155	139	119	95	80
	-29	4	187	183	173	161	144	123	98	83
	-30	5.5	193	189	179	166	149	127	101	86
	-31	5.5	199	195	184	171	153	131	104	88
	-32	5.5	204	200	190	176	158	135	107	91
	-33	5.5	210	206	195	181	162	139	110	93
	-34	5.5	216	212	200	186	167	143	113	96
	-35	5.5	222	217	206	191	171	146	116	98
	-36	5.5	227	223	211	195	175	150	119	101

Dimension and weight

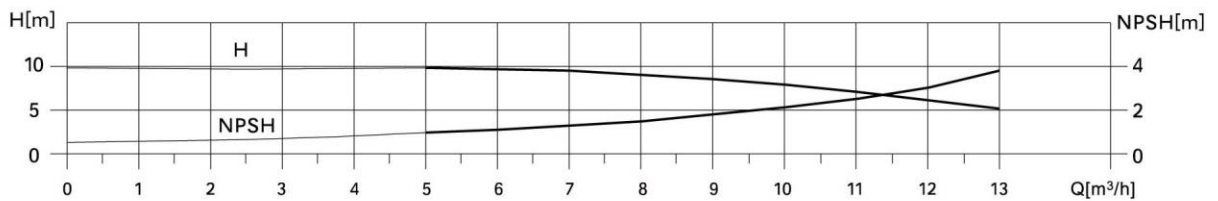
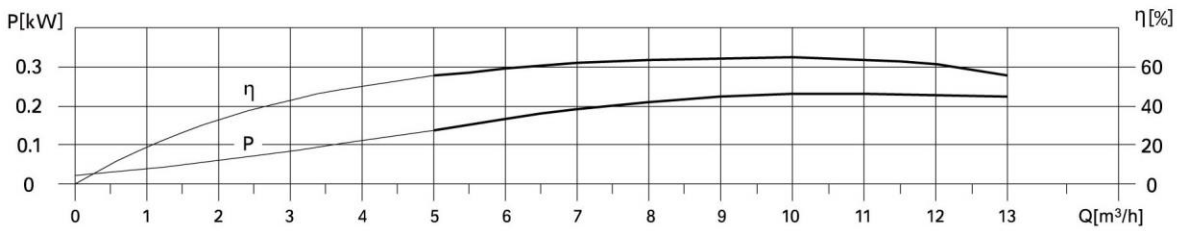
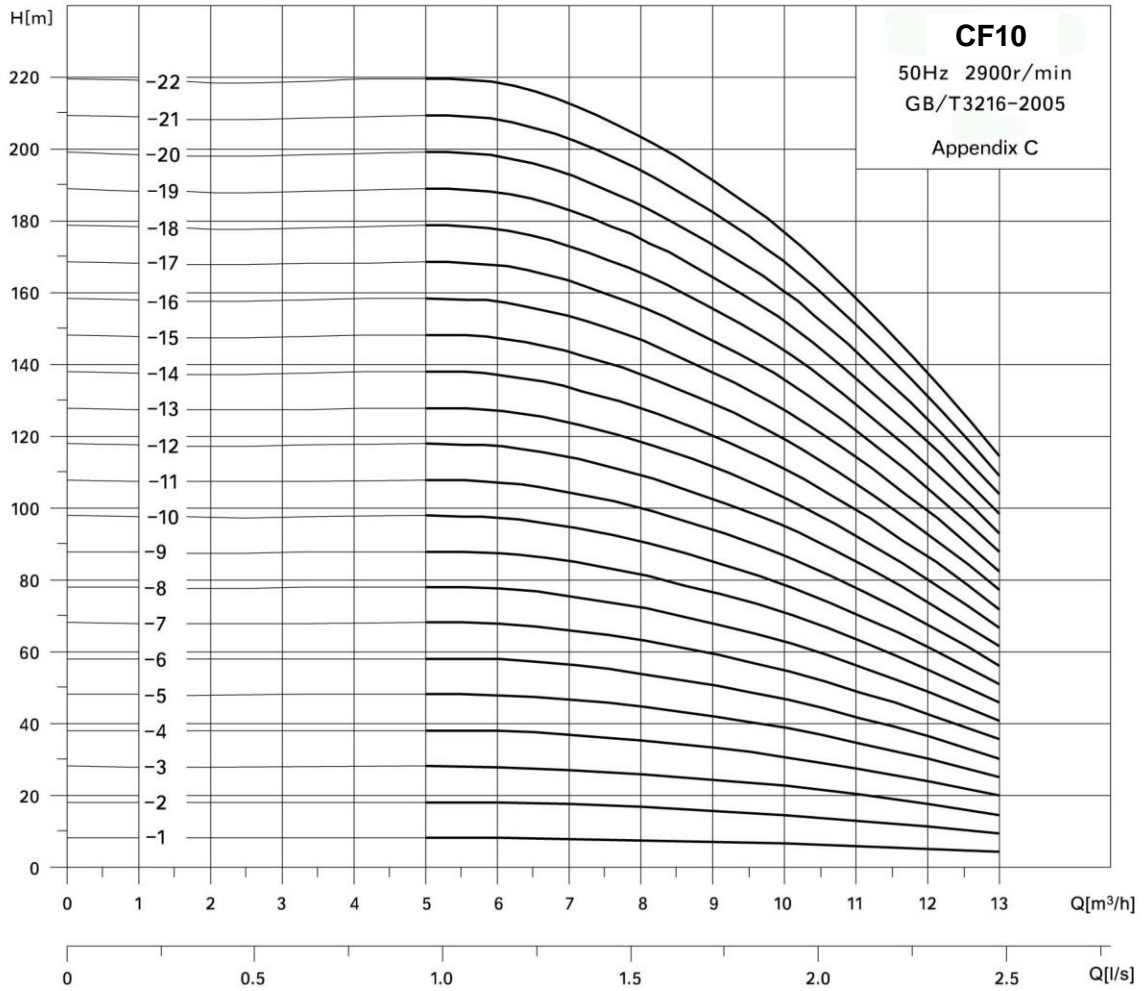
Pump model	Dimension mm						weight kg	
	B1	B2	B1+B2	F1	F2	DBL	DBLT	
CFS	-2	275	215	490	140	119	21	22
	-3	302	215	517	140	119	24	25
	-4	329	215	544	140	119	25	26
	-5	365	244	609	151	125	26	27
	-6	392	244	636	151	125	26	27
	-7	419	244	663	151	125	28	29
	-8	446	244	690	151	125	29	30
	-9	484	287	771	171	138	34	35
	-10	511	287	798	171	138	35	36
	-11	538	287	825	171	138	38	39
	-12	565	287	852	171	138	39	40
	-13	592	287	879	171	138	39	40
	-14	619	287	906	171	138	40	41
	-15	646	287	933	171	138	41	42
	-16	673	287	960	171	138	41	42
	-17	710	337	1047	196	150	49	50
	-18	737	337	1074	196	150	50	51
	-19	764	337	1101	196	150	50	51
	-20	791	337	1128	196	150	51	52
	-21	818	350	1168	215	169	57	58
	-22	845	350	1195	215	169	58	59
	-23	872	350	1222	215	169	58	59
	-24	899	350	1249	215	169	59	60
	-25	926	350	1276	215	169	59	60
	-26	953	350	1303	215	169	60	61
	-27	980	350	1330	215	169	61	62
	-28	1007	350	1357	215	169	61	62
	-29	1034	350	1384	215	169	62	63
	-30	1080	383	1463	257	190	79	80
	-31	1107	383	1490	257	190	81	82
	-32	1134	383	1517	257	190	82	83
	-33	1161	383	1544	257	190	84	85
	-34	1188	383	1571	257	190	86	87
	-35	1215	383	1598	257	190	87	88
	-36	1242	383	1625	257	190	89	90

Installation sketch



Flange (DN 32mm) PN16

Performance Curve:



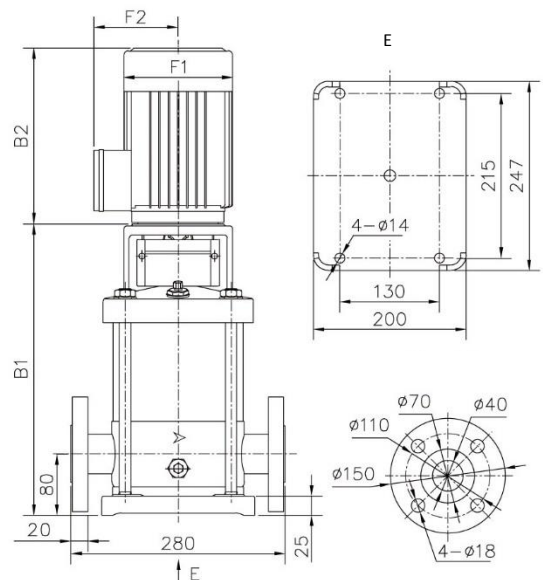
Performance data

Pump model	motor kW	flow m ³ /h	5	6	7	8	9	10	11	12	13
CF10	-1	0.37	8	8	8	7.5	7	6.5	6	5	4
	-2	0.75	18	18	17.5	16.5	15.5	14.5	13	11	9.5
	-3	1.1	28	28	27	26	24.5	22.5	20	17.5	14.5
	-4	1.5	38	38	37	35	33	30.5	27.5	24	20
	-5	2.2	48	48	46.5	44.5	42	38.5	34.5	30	25
	-6	2.2	58	58	56	54	51	46.5	42	36.5	30
	-7	3	68	68	66	63	59	55	49	42.5	35.5
	-8	3	78	78	76	72	68	63	56	49	40.5
	-9	3	88	87	85	81	77	71	63	55	45.5
	-10	4	98	97	95	91	85	79	71	61	51
	-11	4	108	107	104	100	94	87	78	68	56
	-12	4	118	117	114	109	103	95	85	74	61
	-13	5.5	128	127	124	118	111	103	92	80	67
	-14	5.5	138	137	134	128	120	111	99	86	72
	-15	5.5	148	147	144	137	129	119	107	93	77
	-16	5.5	158	158	153	147	138	128	114	99	83
	-17	7.5	168	168	163	156	147	136	121	106	88
	-18	7.5	179	178	173	165	156	144	129	112	93
	-19	7.5	189	188	183	175	164	152	136	118	98
	-20	7.5	199	198	193	184	173	160	144	125	104
	-21	7.5	209	208	203	194	182	169	151	131	109
	-22	7.5	220	218	213	203	191	177	158	138	114

Dimension and weight

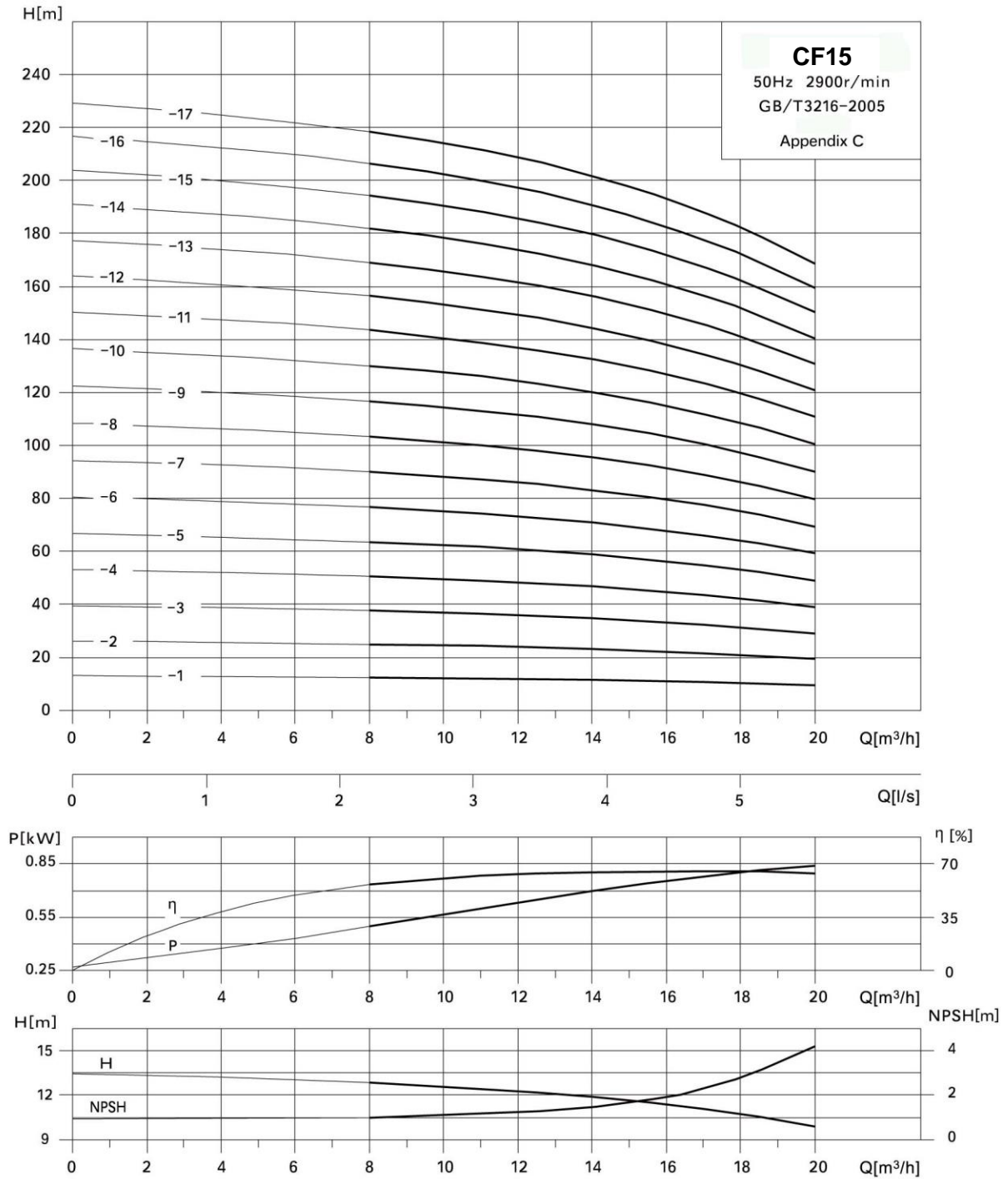
Pump model	Dimension mm					weight kg		
	B1	B2	B1+B2	F1	F2	DBL	DBLT	
CF10	-1	309	215	524	140	119	26	29
	-2	309	244	553	151	125	29	32
	-3	339	244	583	151	125	31	34
	-4	384	287	671	171	138	37	41
	-5	414	287	701	171	138	41	44
	-6	444	287	731	171	138	42	45
	-7	479	337	816	196	150	50	53
	-8	509	337	846	196	150	51	55
	-9	539	337	876	196	150	52	56
	-10	569	355	924	215	169	59	62
	-11	599	355	954	215	169	60	63
	-12	629	355	984	215	169	61	64
	-13	680	383	1063	257	190	79	82
	-14	710	383	1093	257	190	80	83
	-15	740	383	1123	257	190	81	84
	-16	770	383	1153	257	190	82	85
	-17	800	383	1183	257	190	87	90
	-18	830	383	1213	257	190	88	91
	-19	860	383	1243	257	190	89	92
	-20	890	383	1273	257	190	90	93
	-21	920	383	1303	257	190	91	94
	-22	950	383	1333	257	190	92	95

Installation sketch



Flange (DN 40mm) PN16

Performance Curve:



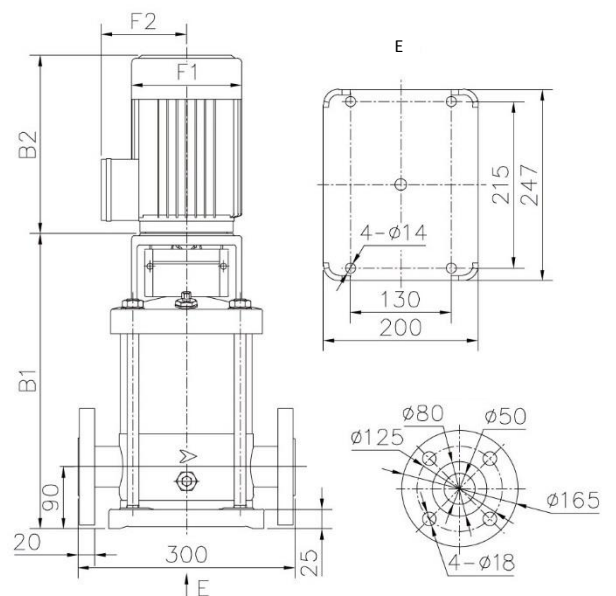
Performance data

Pump model	motor kW	flow m ³ /h	8	10	12	14	15	16	18	20
CF15	-1	1.1	12.5	12	12	11.5	11	11	10.5	9.5
	-2	2.2	25	24.5	24	23	22.5	22	21	19
	-3	3	37.5	37	36	34.5	34	33	31.5	29
	-4	4	51	49.5	48	46.5	45.5	44.5	42	39
	-5	4	64	62	61	59	58	56	53	49
	-6	5.5	77	75	73	71	69	68	64	59
	-7	5.5	90	88	86	83	81	80	75	69
	-8	7.5	103	101	99	95	94	91	86	80
	-9	7.5	117	114	112	108	106	103	97	90
	-10	11	130	128	124	120	118	115	109	100
	-11	11	143	141	137	133	130	127	120	111
	-12	11	156	153	149	144	141	138	130	121
	-13	11	169	166	162	156	153	150	141	131
	-14	11	182	178	174	168	165	161	152	140
	-15	15	194	191	186	180	176	172	162	150
	-16	15	206	202	197	191	187	183	172	159
	-17	15	218	214	209	202	198	193	182	169

Dimension and weight

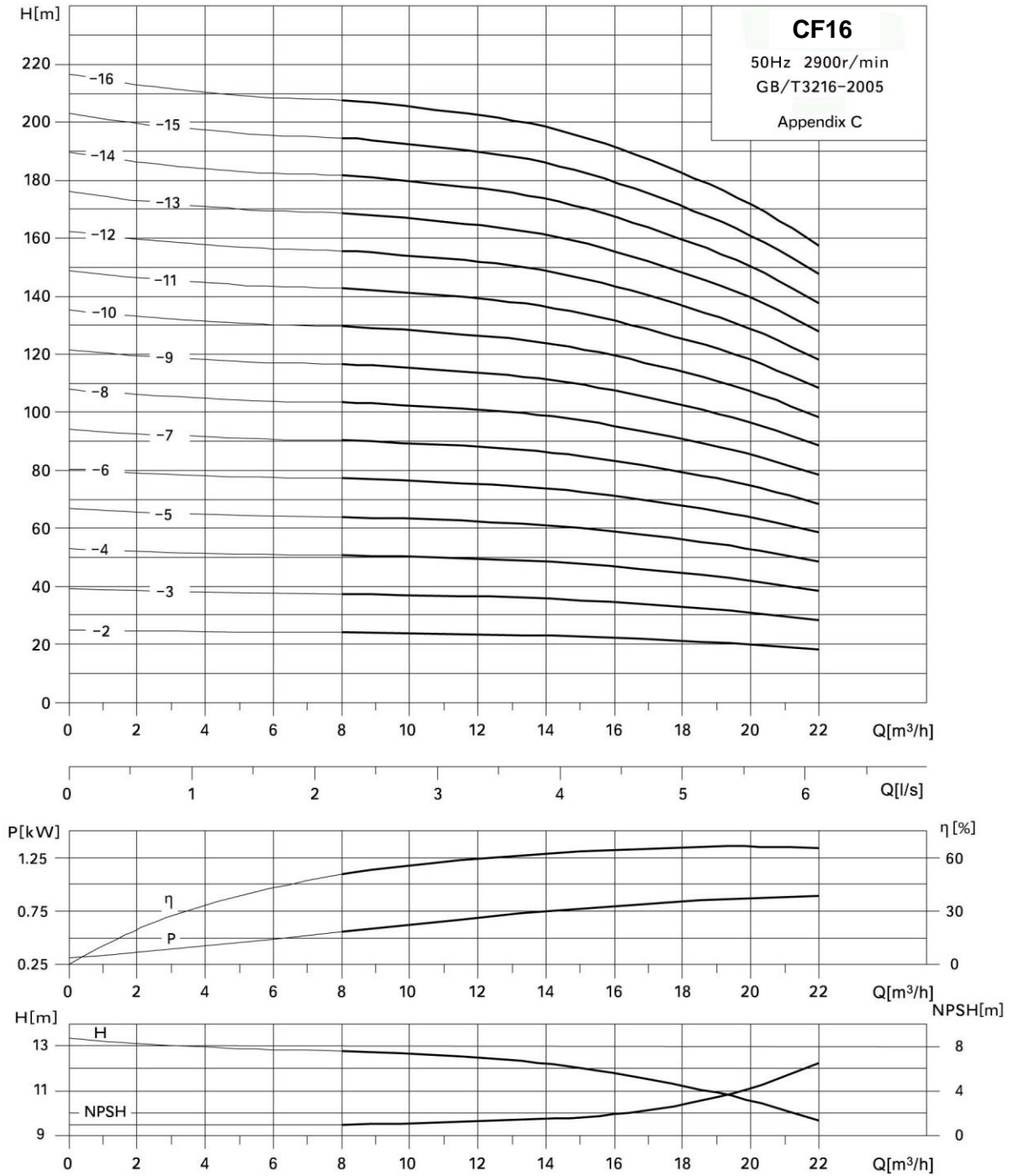
Pump model	Dimension mm						weight kg	
	B1	B2	B1+B2	F1	F2	DBL	DBLT	
CF15	-1	294	244	538	151	125	31	34
	-2	354	287	641	171	138	40	43
	-3	404	337	741	196	150	49	52
	-4	449	350	799	215	169	56	59
	-5	494	350	844	215	169	72	75
	-6	562	383	945	257	190	74	77
	-7	607	383	990	257	190	75	78
	-8	652	383	1035	257	190	81	84
	-9	700	383	1083	257	190	83	86
	-10	829	505	1334	330	261	149	152
	-11	874	505	1379	330	261	151	154
	-12	919	505	1424	330	261	152	155
	-13	964	505	1469	330	261	153	156
	-14	1009	505	1514	330	261	154	157
	-15	1054	505	1559	330	261	166	169
	-16	1099	505	1604	330	261	168	171
	-17	1144	505	1649	330	261	170	173

Installation sketch



Flange (DN 50mm) PN16

Performance Curve:



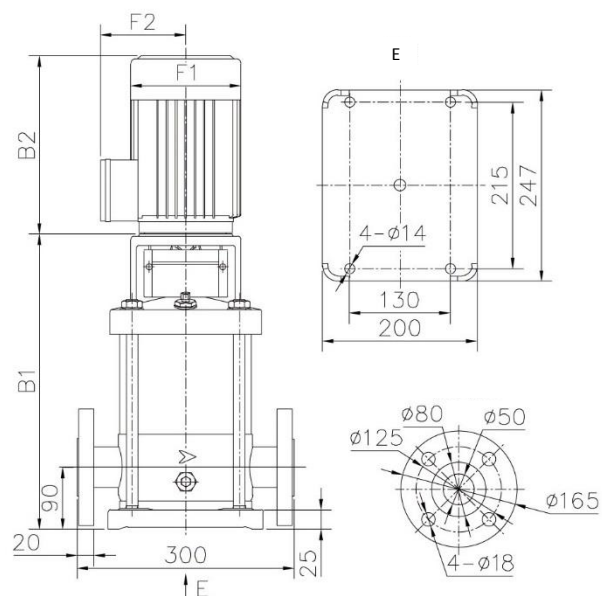
Performance data

Pump model	motor kW	flow m ³ /h	8	10	12	14	16	18	20	22
CF16	-2	2.2	24	23.5	23.5	23	22	21	20	18
	-3	3	37.5	37	36.5	36	34.5	33	31	28.5
	-4	4	51	50	49.5	48.5	47	44.5	42	38.5
	-5	5.5	64	63	63	61	59	56	53	48.5
	-6	5.5	77	77	76	74	71	68	64	59
	-7	7.5	91	90	88	87	84	80	75	69
	-8	7.5	104	103	101	99	96	91	86	79
	-9	11	117	116	114	112	108	103	97	89
	-10	11	130	129	127	124	120	114	108	99
	-11	11	143	142	140	137	132	126	118	109
	-12	11	156	155	152	149	144	137	129	118
	-13	15	169	167	165	162	156	149	140	128
	-14	15	182	180	178	174	168	160	151	138
	-15	15	195	193	191	187	180	172	161	148
-16	15	208	206	203	199	192	183	172	158	

Dimension and weight

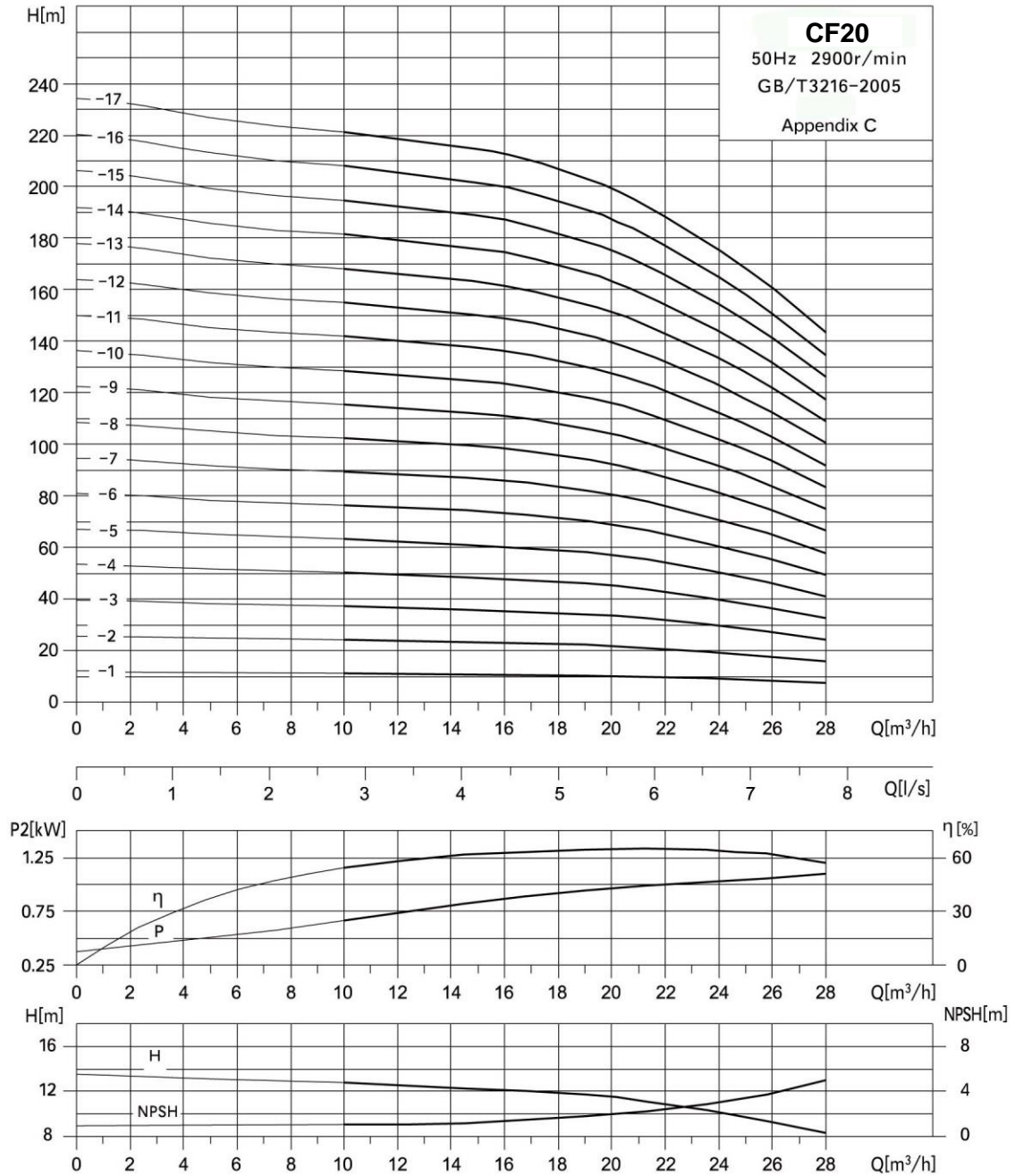
Pump model	Dimension mm						weight kg	
	B1	B2	B1+B2	F1	F2	DBL	DBLT	
CF16	-2	354	287	641	171	138	40	43
	-3	404	337	741	196	150	49	52
	-4	449	350	799	215	169	56	59
	-5	518	383	901	257	190	72	75
	-6	563	383	946	257	190	74	77
	-7	608	383	991	257	190	80	83
	-8	653	383	1036	257	190	81	84
	-9	784	505	1289	330	261	148	151
	-10	829	505	1334	330	261	149	152
	-11	874	505	1379	330	261	151	154
	-12	919	505	1424	330	261	152	155
	-13	964	505	1469	330	261	164	167
	-14	1009	505	1514	330	261	165	168
	-15	1054	505	1559	330	261	166	169
-16	1099	505	1604	330	261	168	171	

Installation sketch



Flange (DN 50mm) PN16

Performance Curve:



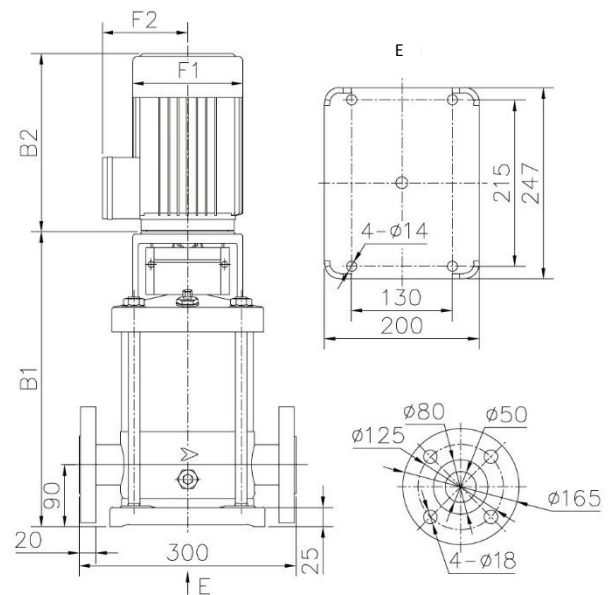
Performance data

Pump model		motor kW	flow m ³ /h	10	12	14	16	18	20	22	24	26	28
CF20	-1	1.1	head m	11.5	11	11	10.5	10.5	10	9.5	9	8	7.5
	-2	2.2		24.5	24	23.5	23	22.5	22	20.5	19.5	17.5	16
	-3	4		37.5	37	36	35.5	34.5	34	32	29.5	27	24
	-4	5.5		51	50	49	48	47	45.5	43	40	36.5	32.5
	-5	5.5		64	63	61	60	59	57	54	51	46	41
	-6	7.5		77	76	74	73	71	69	65	61	56	49.5
	-7	7.5		90	88	87	85	83	81	76	71	65	58
	-8	11		103	101	99	98	95	93	88	82	75	67
	-9	11		116	114	112	110	107	105	99	92	84	75
	-10	11		129	127	125	123	119	116	110	102	94	84
	-11	15		142	140	137	135	132	128	121	113	103	92
	-12	15		156	153	150	148	144	140	132	123	113	101
	-13	15		169	166	163	160	156	152	144	134	122	109
	-14	15		182	179	176	173	168	164	155	144	132	118
	-15	18.5		195	192	188	185	181	176	166	155	142	127
	-16	18.5		209	205	201	198	193	188	178	165	151	135
	-17	18.5		222	219	214	211	205	200	189	176	161	144

Dimension and weight

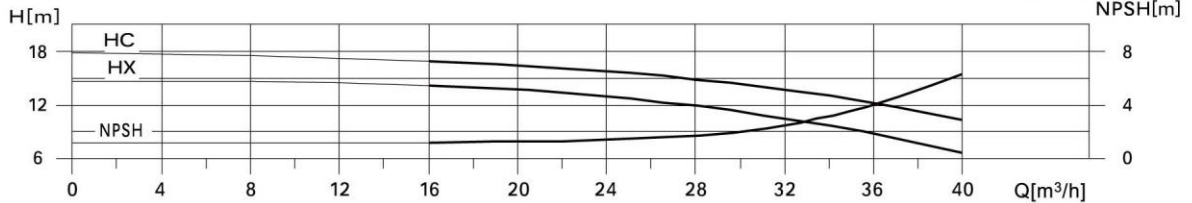
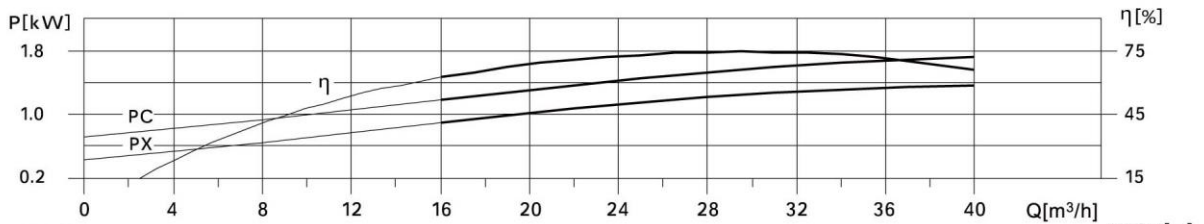
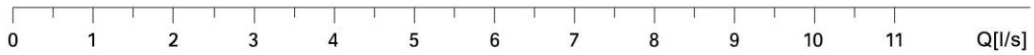
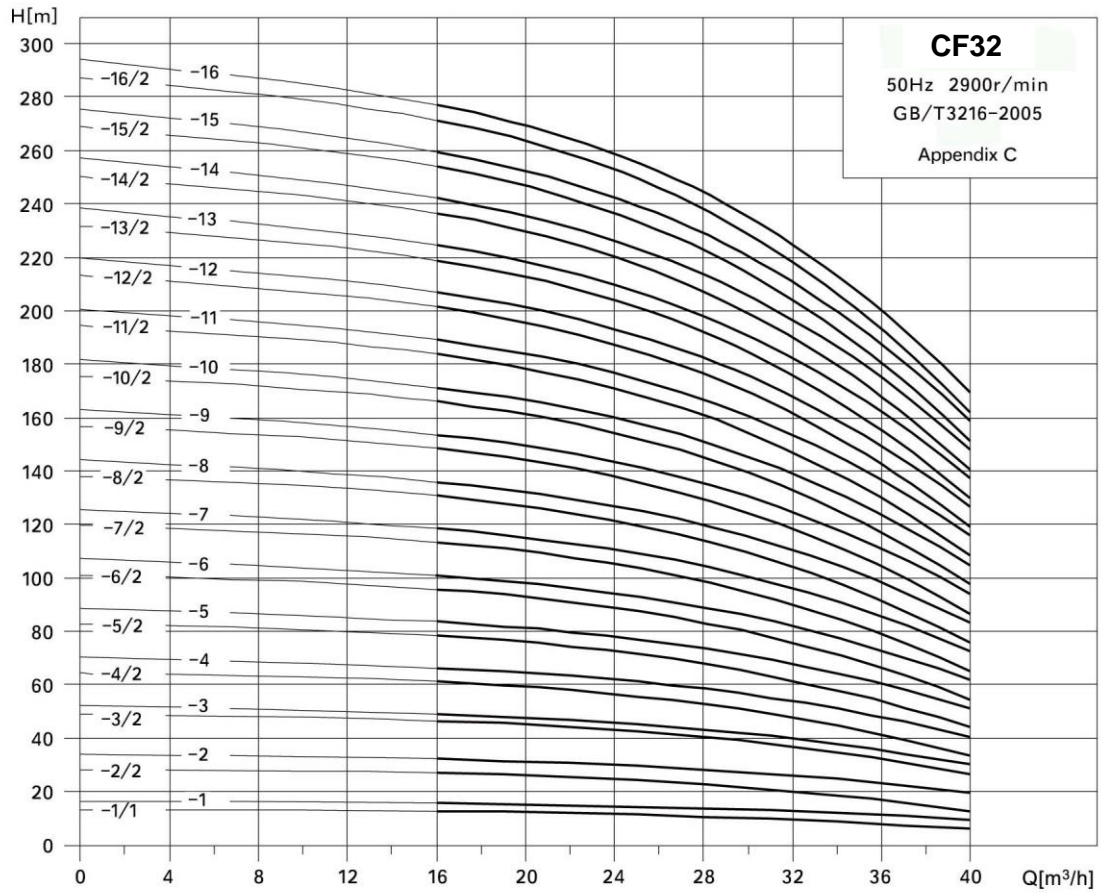
Pump model	Dimension mm							weight kg	
	B1	B2	B1+B2	F1	F2	DBL	DBLT		
CF20	-1	339	244	583	151	125	32	35	
	-2	354	287	641	171	138	41	44	
	-3	404	350	754	215	169	54	57	
	-4	473	383	856	257	190	72	75	
	-5	518	383	901	257	190	73	76	
	-6	563	383	946	257	190	78	81	
	-7	608	383	991	257	190	80	83	
	-8	740	505	1245	330	261	146	149	
	-9	784	505	1289	330	261	148	151	
	-10	829	505	1334	330	261	150	153	
	-11	874	505	1379	330	261	161	164	
	-12	919	505	1424	330	261	162	165	
	-13	964	505	1469	330	261	164	167	
	-14	1009	505	1514	330	261	165	168	
	-15	1054	560	1614	330	261	187	190	
	-16	1099	560	1659	330	261	188	191	
	-17	1144	560	1704	330	261	189	192	

Installation sketch



Flange (DN 50mm) PN16

Performance Curve:



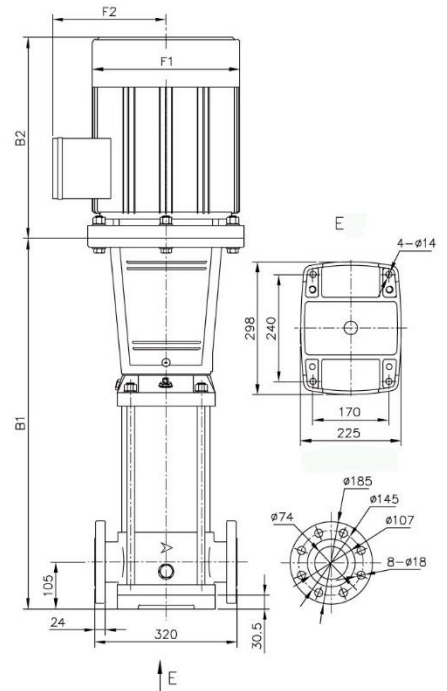
Performance data

Pump model	motor kW	flow m ³ /h	16	20	24	28	32	36	40
CF32	-1/1	1.5	12.5	12	11.5	10.5	9.5	8	6
	-1	2.2	15.5	15	14.5	13.5	12.5	11	9.5
	-2/2	3	27	26	24.5	22.5	20	16.5	12.5
	-2	4	32	31	30	28.5	26	23	19.5
	-3/2	5.5	46.5	45	43	40.5	37	32	26.5
	-3	5.5	49	47.5	46	43.5	40	35.5	30
	-4/2	7.5	61	59	57	53	47.5	41.5	33.5
	-4	7.5	66	64	62	59	54	48	40.5
	-5/2	11	78	76	73	68	62	54	44
	-5	11	84	81	78	74	68	60	51
	-6/2	11	96	93	89	83	76	66	55
	-6	11	101	98	94	89	82	73	62
	-7/2	15	113	110	105	99	90	79	65
	-7	15	118	115	111	105	96	86	73
	-8/2	15	131	127	121	114	104	92	76
	-8	15	136	132	127	120	110	98	83
	-9/2	18.5	148	144	138	130	118	104	87
	-9	18.5	154	149	143	136	125	111	94
	-10/2	18.5	166	161	154	145	133	117	97
	-10	18.5	171	167	160	151	139	124	105
	-11/2	22	184	179	171	161	147	130	108
	-11	22	189	184	177	167	154	137	116
	-12/2	22	201	196	187	176	161	143	119
	-12	22	207	201	193	182	168	150	127
	-13/2	30	219	213	204	192	176	155	130
	-13	30	224	218	210	198	182	162	137
	-14/2	30	236	230	220	207	190	168	141
	-14	30	242	235	226	214	197	175	148
-15/2	30	254	247	236	223	204	181	151	
-15	30	260	252	242	229	211	188	159	
-16/2	30	271	264	253	238	218	193	162	
-16	30	277	269	259	244	225	200	170	

Dimension and weight

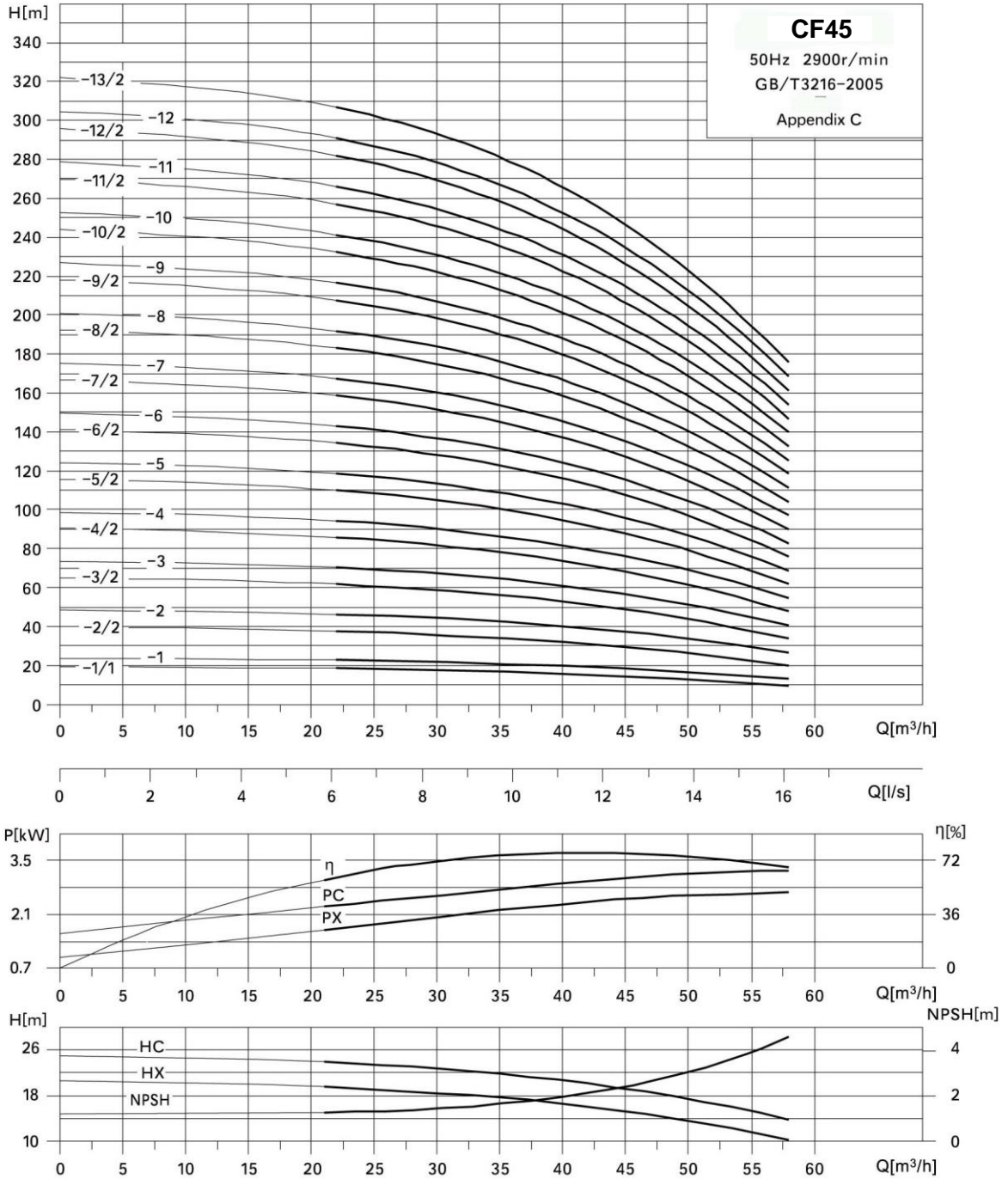
Pump model	Dimension mm						weight kg	
	B1	B2	B1+B2	F1	F2	DBL	DBLT	
CF32	-1/1	456	287	743	171	138	56	63
	-1	456	287	743	171	138	58	65
	-2/2	526	337	863	196	150	68	75
	-2	526	350	876	215	169	74	81
	-3/2	596	383	979	257	190	91	98
	-3	596	383	979	257	190	91	98
	-4/2	666	383	1049	257	190	98	105
	-4	666	383	1049	257	190	98	105
	-5/2	831	505	1336	330	261	167	174
	-5	831	505	1336	330	261	167	174
	-6/2	901	505	1406	330	261	169	176
	-6	901	505	1406	330	261	170	177
	-7/2	971	505	1476	330	261	182	189
	-7	971	505	1476	330	261	183	190
	-8/2	1041	505	1546	330	261	185	192
	-8	1041	505	1546	330	261	186	193
	-9/2	1111	560	1671	330	261	208	215
	-9	1111	560	1671	330	261	208	215
	-10/2	1181	560	1741	330	261	211	218
	-10	1181	560	1741	330	261	211	218
	-11/2	1251	590	1841	380	280	250	257
	-11	1251	590	1841	380	280	250	257
	-12/2	1321	590	1911	380	280	253	260
	-12	1321	590	1911	380	280	253	260
	-13/2	1391	660	2051	420	314	311	318
	-13	1391	660	2051	420	314	311	318
	-14/2	1461	660	2121	420	314	313	320
	-14	1461	660	2121	420	314	314	321
-15/2	1531	660	2191	420	314	336	338	
-15	1531	660	2191	420	314	337	339	
-16/2	1601	660	2261	420	314	338	340	
-16	1601	660	2261	420	314	339	341	

Installation sketch



Flange (DN 74mm) PN16

Performance Curve:



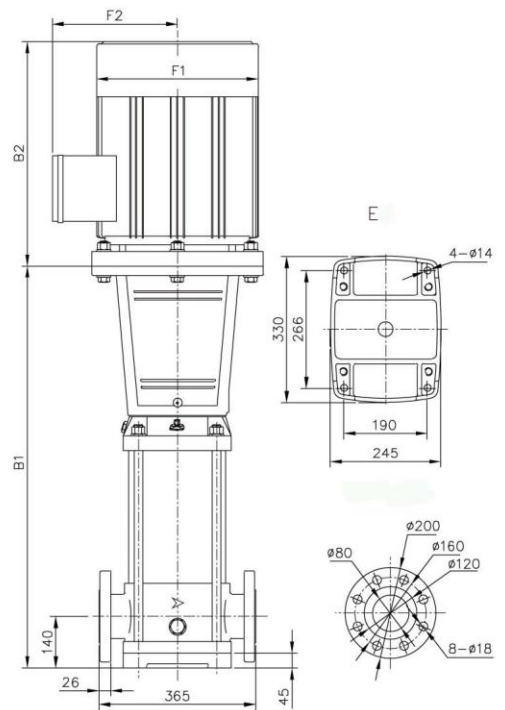
Performance data

Pump model	motor kW	flow m ³ /h	22	25	30	35	40	45	50	55	58
CF45	-1/1	3	18.5	18	17.5	16.5	15.5	14.5	12.5	11	9.5
	-1	4	22.5	22.5	21.5	20.5	19.5	18	16.5	14.5	13
	-2/2	5.5	37.5	37	35.5	34	32	29.5	26	22.5	20
	-2	7.5	46.5	45.5	44.5	42.5	40.5	37.5	34	29.5	27
	-3/2	11	62	61	59	56	53	49	44	37.5	33.5
	-3	11	70	69	67	65	61	57	51	45	40.5
	-4/2	15	86	85	82	79	74	69	62	53	47.5
	-4	15	95	93	90	87	82	76	69	61	55
	-5/2	18.5	110	109	105	101	95	88	79	69	62
	-5	18.5	119	117	114	109	103	96	87	76	69
	-6/2	22	135	133	128	123	116	108	97	84	76
	-6	22	143	141	137	132	125	116	105	92	83
	-7/2	30	159	157	152	146	138	127	115	100	90
	-7	30	168	166	161	154	146	135	123	108	97
	-8/2	30	184	181	175	168	159	147	133	116	104
	-8	30	193	190	184	177	167	155	141	123	112
	-9/2	30	208	205	199	191	180	167	151	132	119
	-9	37	217	214	208	199	189	175	159	139	126
	-10/2	37	233	230	223	213	202	187	169	147	133
	-10	37	242	239	232	222	210	195	177	155	140
-11/2	45	258	254	246	236	223	207	187	163	147	
-11	45	267	263	255	245	232	215	195	171	155	
-12/2	45	283	279	270	259	245	227	205	179	162	
-12	45	292	288	279	268	253	235	213	187	169	
-13/2	45	308	303	294	282	267	247	224	195	176	

Dimension and weight

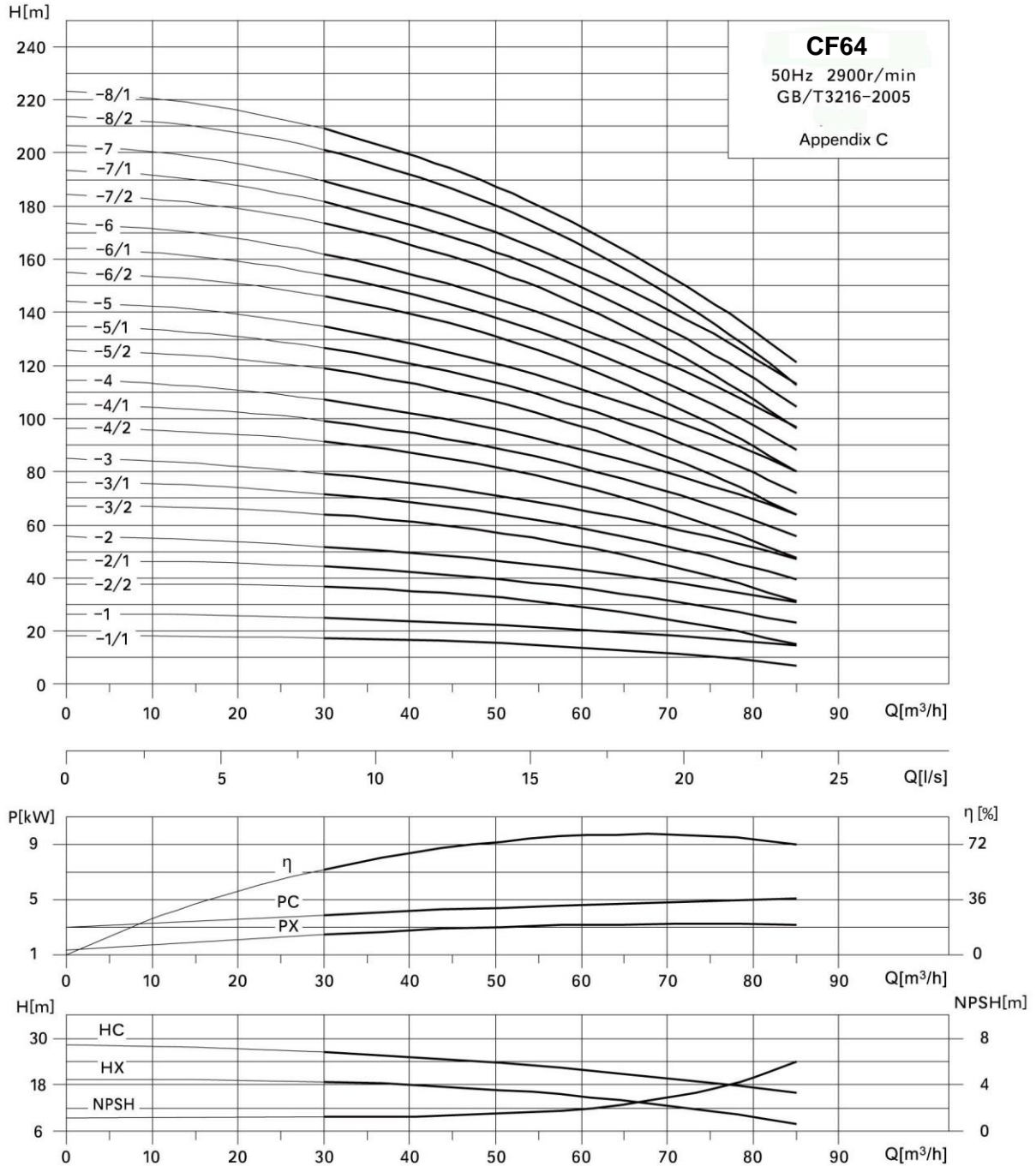
Pump model	Dimension mm						weight kg	
	B1	B2	B1+B2	F1	F2	DBL	DBLT	
CF45	-1/1	507	337	844	196	150	75	84
	-1	507	350	857	214	169	80	89
	-2/2	587	383	970	257	190	100	109
	-2	587	383	970	257	190	104	113
	-3/2	762	505	1267	330	261	172	181
	-3	762	505	1267	330	261	172	181
	-4/2	842	505	1347	330	261	185	194
	-4	842	505	1347	330	261	185	194
	-5/2	922	560	1482	330	261	208	217
	-5	922	560	1482	330	261	208	217
	-6/2	1002	590	1592	380	280	248	257
	-6	1002	590	1592	380	280	248	257
	-7/2	1082	660	1742	420	314	306	315
	-7	1082	660	1742	420	314	306	315
	-8/2	1162	660	1822	420	314	309	318
	-8	1162	660	1822	420	314	309	318
	-9/2	1242	660	1902	420	314	312	321
	-9	1242	660	1902	420	314	335	344
	-10/2	1322	660	1982	420	314	338	347
	-10	1322	660	1982	420	314	338	347
-11/2	1402	684	2086	470	335	402	411	
-11	1402	684	2086	470	335	396	405	
-12/2	1482	684	2166	470	335	399	408	
-12	1482	684	2166	470	335	399	408	
-13/2	1562	684	2246	470	335	403	412	

Installation sketch



Flange (DN 80mm) PN16

Performance Curve:



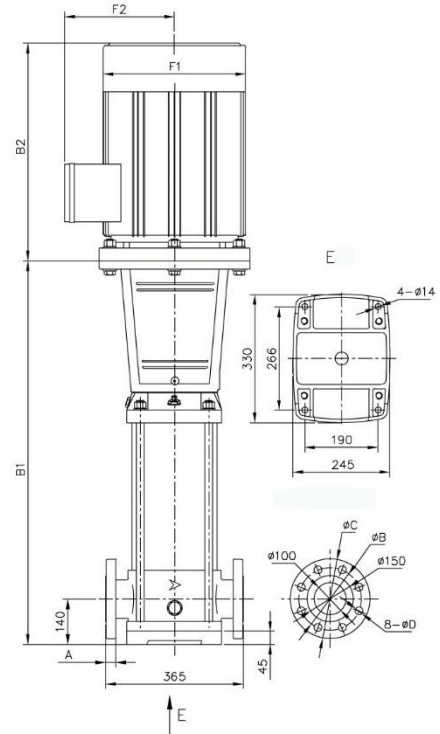
Performance data

Pump model		motor kW	flow m ³ /h	30	40	50	60	64	70	80	85
CF64	-1/1	4	head m	17.5	16.5	15.5	14	13	11.5	9	7
	-1	5.5		25	23.5	22.5	20.5	19.5	18.5	16	15
	-2/2	7.5		36.5	35	32.5	29.5	27.5	24.5	18.5	15
	-2/1	11		44.5	42.5	39.5	36	34.5	31.5	26	23
	-2	11		52	49.5	46.5	43	41.5	38.5	33.5	31
	-3/2	15		64	61	57	52	49.5	45	36.5	31
	-3/1	15		72	69	64	59	56	52	44	39.5
	-3	18.5		80	76	71	66	63	59	52	47.5
	-4/2	18.5		92	88	82	75	71	65	54	47.5
	-4/1	22		100	95	89	82	78	73	62	56
	-4	22		107	102	96	89	85	80	70	64
	-5/2	30		119	114	107	97	93	86	72	64
	-5/1	30		127	121	114	104	100	93	80	72
	-5	30		135	129	121	112	107	100	88	80
	-6/2	30		147	140	131	120	115	106	90	80
	-6/1	37		155	147	139	127	122	114	98	89
	-6	37		163	155	146	134	129	112	106	97
	-7/2	37		174	166	156	143	137	127	108	97
	-7/1	37		182	174	163	150	144	134	116	105
	-7	45		190	181	171	157	151	142	124	113
-8/2	45	202	192	181	166	159	147	126	113		
-8/1	45	210	200	188	173	166	155	134	121		

Dimension and weight

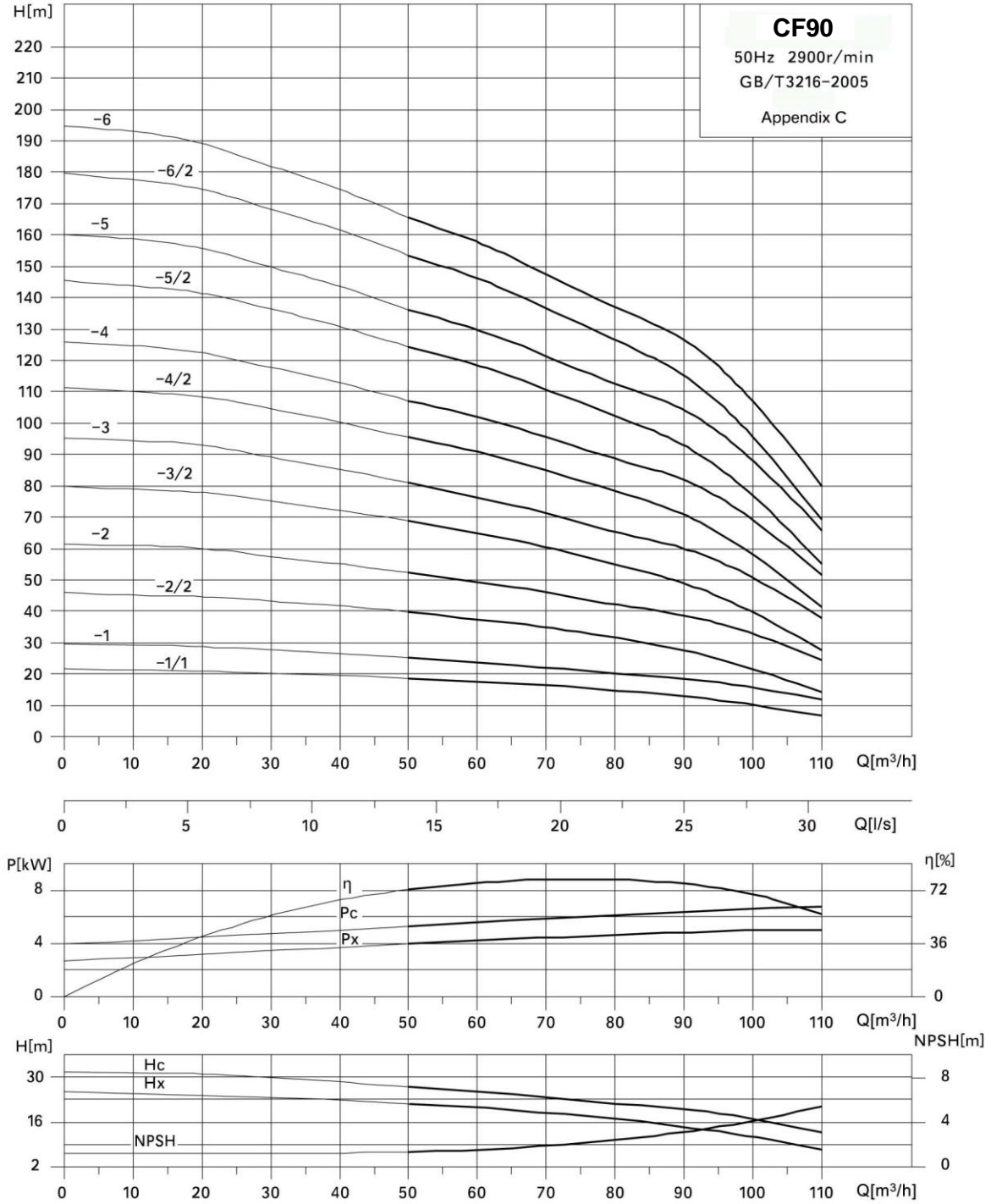
Pump model	Dimension mm										weight kg		
	B1	B2	B1+B2	F1	F2	A	B	C	D	DBL	DBLT		
CF64	-1/1	522	350	872	214	169	26	180	220	18	86	89	
	-1	522	383	905	257	190	26	180	220	18	101	104	
	-2/2	605	383	988	257	190	26	180	220	18	109	112	
	-2/1	700	505	1205	330	261	26	180	220	18	175	178	
	-2	700	505	1205	330	261	26	180	220	18	175	178	
	-3/2	783	505	1288	330	261	26	180	220	18	189	192	
	-3/1	783	505	1288	330	261	26	180	220	18	189	192	
	-3	783	560	1343	330	261	26	180	220	18	209	212	
	-4/2	866	560	1426	330	261	26	180	220	18	213	216	
	-4/1	866	590	1456	380	280	26	180	220	18	250	253	
	-4	866	590	1456	380	280	26	180	220	18	250	253	
	-5/2	949	660	1609	420	314	26	180	220	18	310	313	
	-5/1	949	660	1609	420	314	26	180	220	18	310	313	
	-5	949	660	1609	420	314	26	180	220	18	310	313	
	-6/2	1032	660	1692	420	314	28	190	235	22	314	317	
	-6/1	1032	660	1692	420	314	28	190	235	22	337	340	
	-6	1032	660	1692	420	314	28	190	235	22	337	340	
	-7/2	1115	660	1775	420	314	28	190	235	22	341	344	
	-7/1	1115	660	1775	420	314	28	190	235	22	341	344	
	-7	1115	684	1799	470	335	28	190	235	22	396	399	
-8/2	1198	684	1882	470	335	28	190	235	22	400	403		
-8/1	1198	684	1882	470	335	28	190	235	22	400	403		

Installation sketch



Flange (DN 100mm) PN16

Performance Curve:



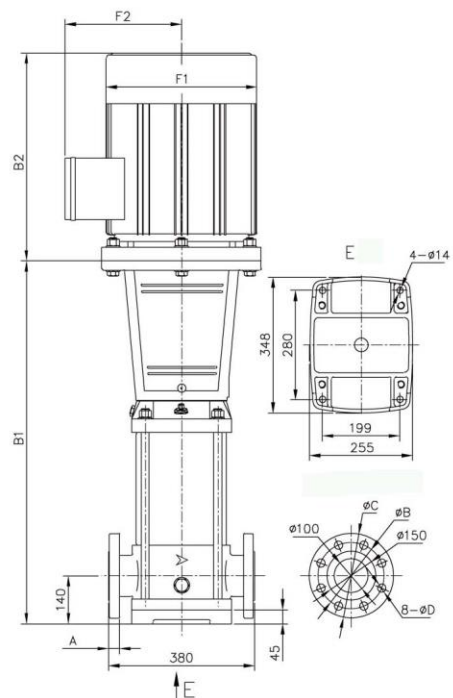
■ Performance data

Pump model		motor kW	flow m ³ /h	50	60	70	80	90	100	110
CF90	-1/1	5.5	head m	19	18	16	15	13	10	6.5
	-1	7.5		25	23.5	22	20	18.5	15.5	11.5
	-2/2	11		40	37	35	31.5	27.5	21.5	14
	-2	15		52	49	46	42	38.5	32.5	24.5
	-3/2	18.5		69	65	60	55	49	39.5	27.5
	-3	22		81	76	71	65	60	51	38
	-4/2	30		95	91	85	78	71	58	41
	-4	30		107	102	95	89	82	69	52
	-5/2	37		124	118	111	102	93	77	55
	-5	37		136	130	121	113	104	88	66
	-6/2	45		154	146	137	126	115	95	69
	-6	45		166	158	147	137	126	107	80

■ Dimension and weight

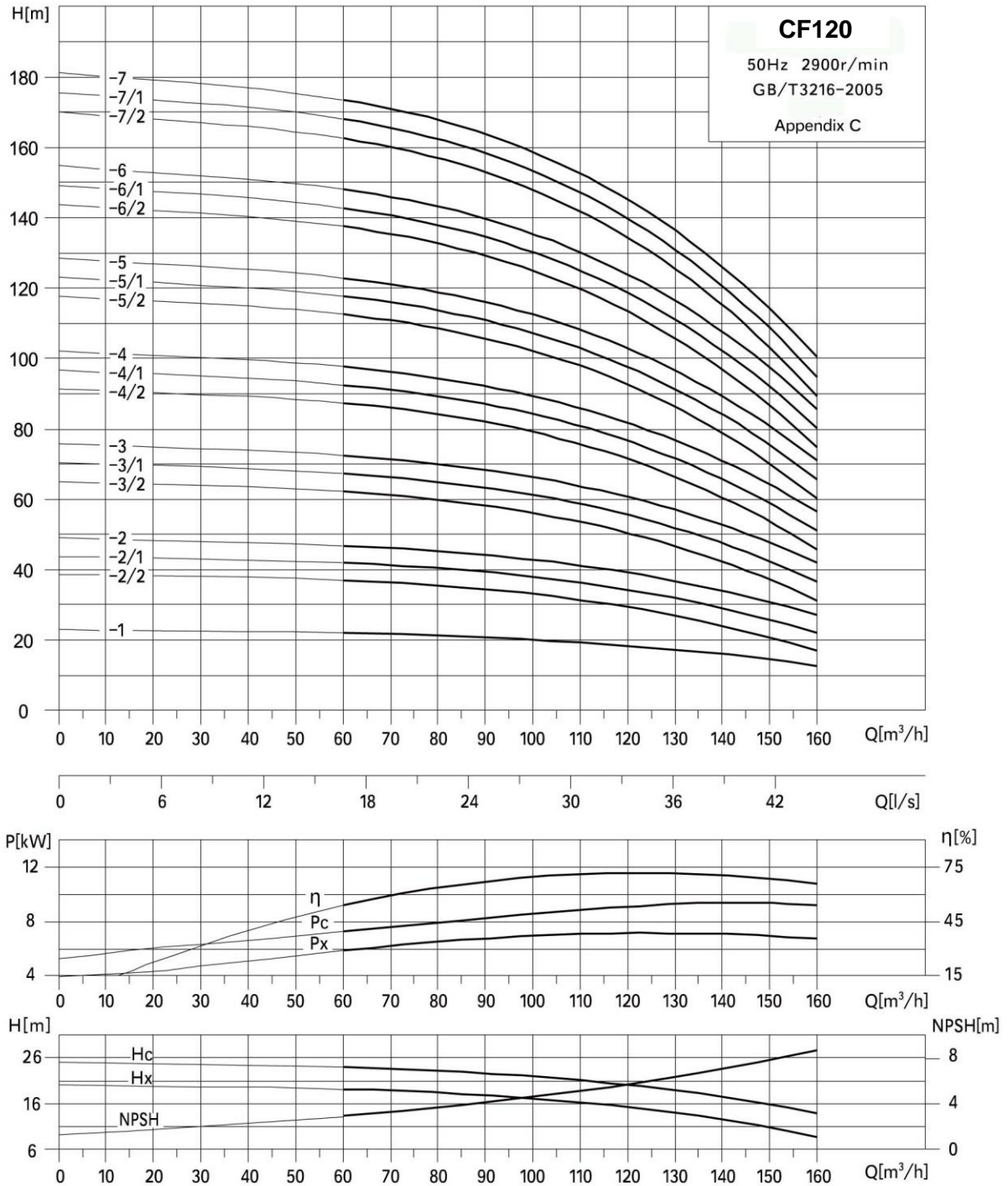
Pump model	Dimension mm											weight kg		
	B1	B2	B1+B2	F1	F2	A	B	C	D	DBL	DBLT			
CF90	-1/1	527	383	910	257	190	24	180	220	18	98	101		
	-1	527	383	910	257	190	24	180	220	18	102	105		
	-2/2	714	505	1219	330	261	24	180	220	18	176	179		
	-2	714	505	1219	330	261	24	180	220	18	186	189		
	-3/2	806	560	1366	330	261	24	180	220	18	213	216		
	-3	806	590	1396	380	280	24	180	220	18	250	253		
	-4/2	898	660	1558	420	314	24	180	220	18	313	316		
	-4	898	660	1558	420	314	24	180	220	18	313	316		
	-5/2	990	660	1650	420	314	28	190	235	22	344	347		
	-5	990	660	1650	420	314	28	190	235	22	344	347		
	-6/2	1082	684	1766	470	335	28	190	235	22	406	409		
	-6	1082	684	1766	470	335	28	190	235	22	406	409		

■ Installation sketch



Flange (DN 100mm) PN16

Performance Curve:



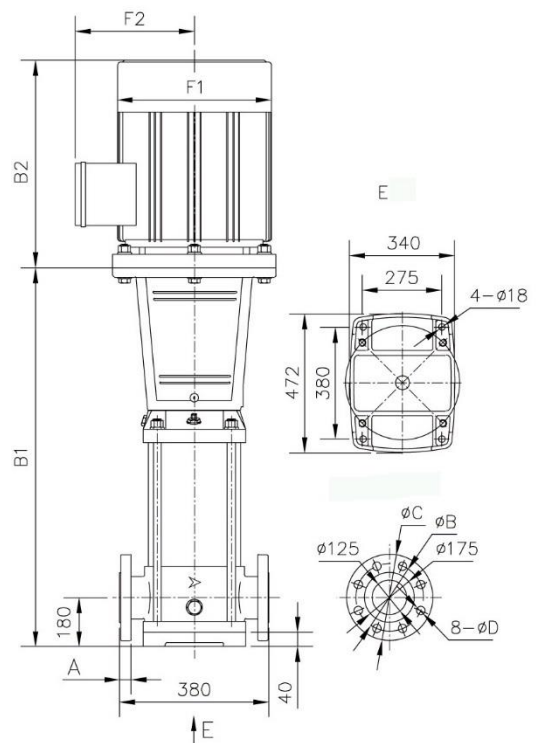
Performance data

Pump model	motor kW	flow m ³ /h	80	90	100	110	120	130	140	150	160	170	180
CF120	-1/1	11	16.5	16	15.5	15.5	15	14.5	13.5	12.5	11.5	10	8
	-1	15	23	22.5	22	21.5	21	20.5	19.5	19	18	17	15
	-2/2	18.5	35.5	34.5	33.5	33	32	30.5	29	27	24.5	21	17
	-2/1	22	42.5	41.5	40.5	39.5	38	37	35.5	33.5	31.5	28.5	25
	-2	30	49	48	47	45.5	44.5	43.5	42	40.5	38.5	36	32.5
	-3/2	30	62	60	59	57	55	54	51	48.5	44.5	40	34
	-3/1	37	69	67	66	64	62	60	58	56	52	48	42
	-3	37	76	74	72	71	69	67	65	62	60	56	50
	-4/2	45	88	86	84	82	79	77	74	70	65	59	52
	-4/1	45	95	93	91	89	86	84	81	77	73	67	60
	-4	55	103	101	98	96	93	91	88	85	81	75	68
	-5/2	55	115	112	109	106	103	100	97	92	86	79	69
	-5/1	75	122	119	117	114	111	108	104	100	94	87	78
	-5	75	130	127	124	121	118	115	111	107	102	95	86
	-6/2	75	142	138	135	132	128	124	120	114	108	99	87
	-6/1	75	149	146	143	139	136	132	127	122	116	107	96
	-6	75	157	154	150	147	143	139	135	130	124	115	104

Dimension and weight

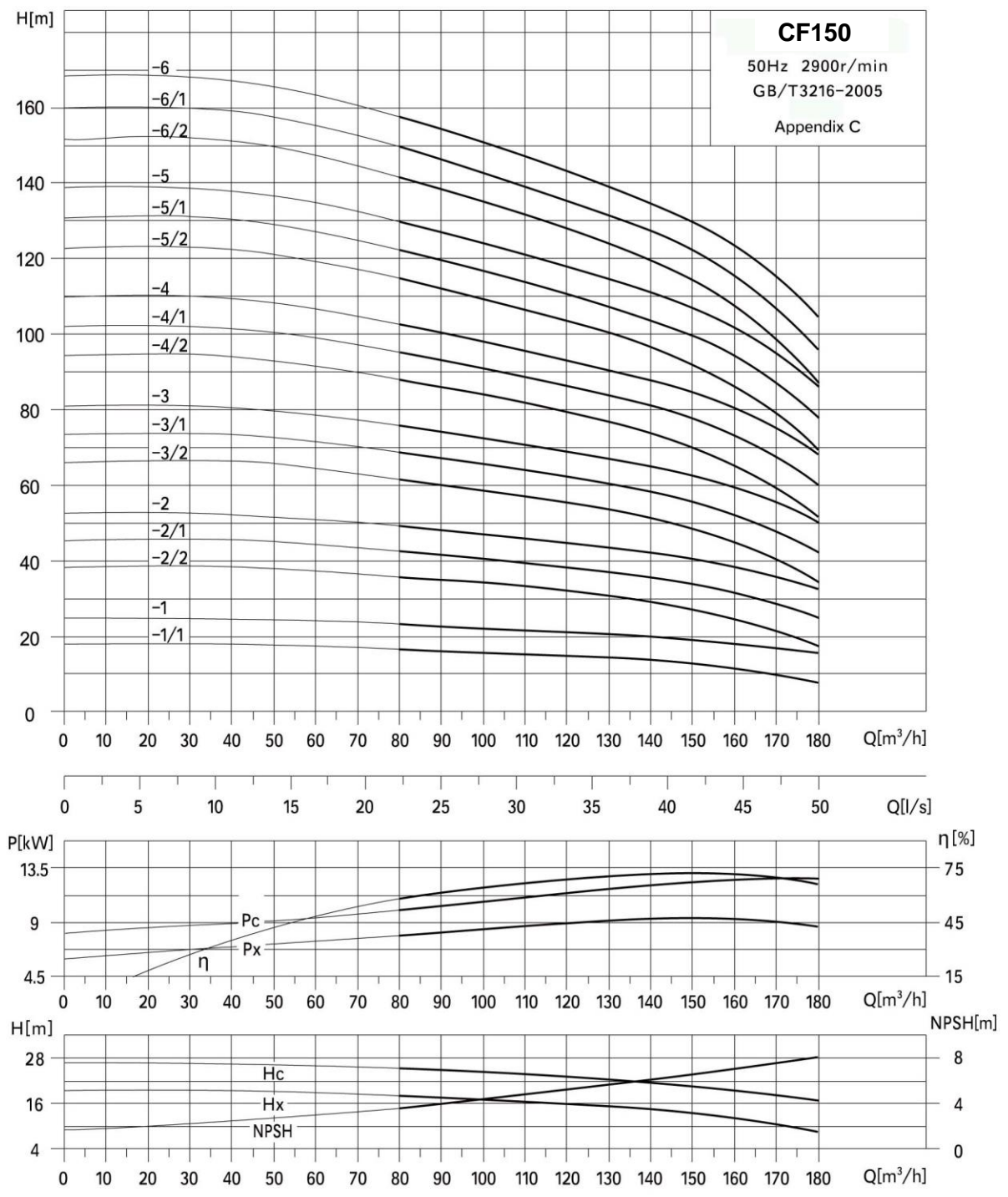
Pump model	Dimension mm										weight kg		
	B1	B2	B1+B2	F1	F2	A	B	C	D	DBL	DBLT		
CF120	-1/1	786	505	1291	330	261	23	210	250	18	225	217	
	-1	786	505	1291	330	261	23	210	250	18	230	222	
	-2/2	946	560	1506	330	261	23	210	250	18	247	239	
	-2/1	946	590	1536	380	280	23	210	250	18	292	284	
	-2	946	660	1606	420	314	23	210	250	18	347	339	
	-3/2	1106	660	1766	420	314	23	210	250	18	361	353	
	-3/1	1106	660	1766	420	314	23	210	250	18	361	353	
	-3	1106	660	1766	420	314	23	210	250	18	386	378	
	-4/2	1266	694	1960	470	335	23	210	250	18	462	454	
	-4/1	1266	694	1960	470	335	23	210	250	18	462	454	
	-4	1316	780	2096	510	370	23	210	250	18	562	554	
	-5/2	1476	780	2256	510	370	23	210	250	18	575	567	
	-5/1	1476	831	2307	547	407	23	210	250	18	695	687	
	-5	1476	831	2307	547	407	23	210	250	18	695	687	
	-6/2	1656	831	2487	547	407	29	220	270	26	710	702	
	-6/1	1656	831	2487	547	407	29	220	270	26	710	702	
	-6	1656	831	2487	547	407	29	220	270	26	710	702	

Installation sketch



Flange (DN 125mm) PN16

Performance Curve:



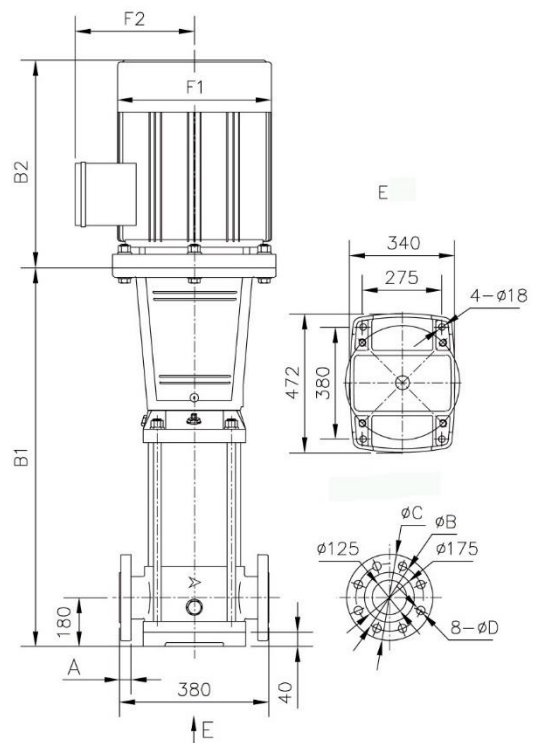
Performance data

Pump model	motor kW	flow m ³ /h	80	90	100	110	120	130	140	150	160	170	180
CF150	-1/1	11	16.5	16	15.5	15.5	15	14.5	13.5	12.5	11.5	10	8
	-1	15	23	22.5	22	21.5	21	20.5	19.5	19	18	17	15
	-2/2	18.5	35.5	34.5	33.5	33	32	30.5	29	27	24.5	21	17
	-2/1	22	42.5	41.5	40.5	39.5	38	37	35.5	33.5	31.5	28.5	25
	-2	30	49	48	47	45.5	44.5	43.5	42	40.5	38.5	36	32.5
	-3/2	30	62	60	59	57	55	54	51	48.5	44.5	40	34
	-3/1	37	69	67	66	64	62	60	58	56	52	48	42
	-3	37	76	74	72	71	69	67	65	62	60	56	50
	-4/2	45	88	86	84	82	79	77	74	70	65	59	52
	-4/1	45	95	93	91	89	86	84	81	77	73	67	60
	-4	55	103	101	98	96	93	91	88	85	81	75	68
	-5/2	55	115	112	109	106	103	100	97	92	86	79	69
	-5/1	75	122	119	117	114	111	108	104	100	94	87	78
	-5	75	130	127	124	121	118	115	111	107	102	95	86
	-6/2	75	142	138	135	132	128	124	120	114	108	99	87
	-6/1	75	149	146	143	139	136	132	127	122	116	107	96
	-6	75	157	154	150	147	143	139	135	130	124	115	104

Dimension and weight

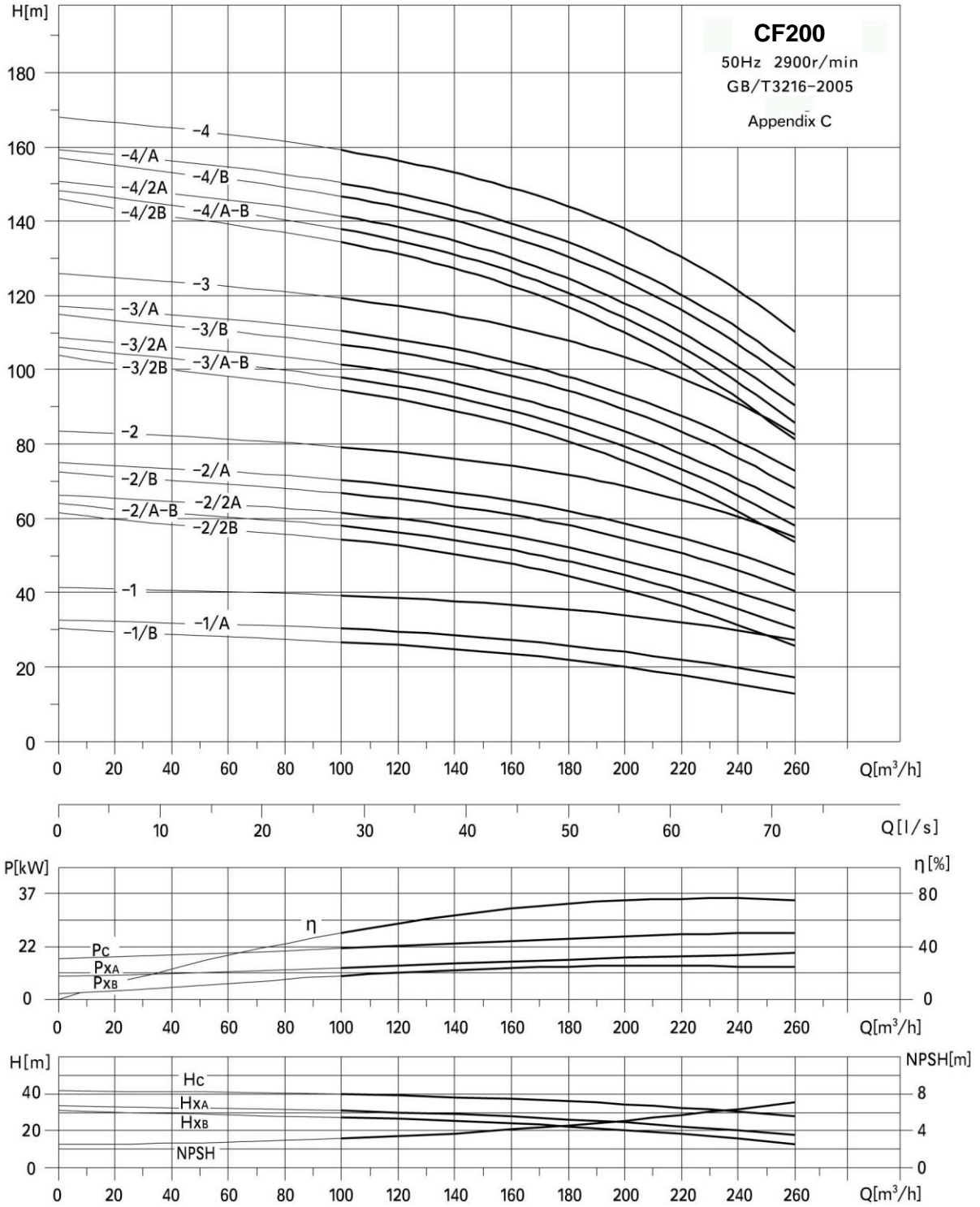
Pump model	Dimension mm										weight kg		
	B1	B2	B1+B2	F1	F2	A	B	C	D	DBL	DBLT		
CF150	-1/1	786	505	1291	330	261	23	210	250	18	225	217	
	-1	786	505	1291	330	261	23	210	250	18	230	222	
	-2/2	946	560	1506	330	261	23	210	250	18	247	239	
	-2/1	946	590	1536	380	280	23	210	250	18	292	284	
	-2	946	660	1606	420	314	23	210	250	18	347	339	
	-3/2	1106	660	1766	420	314	23	210	250	18	361	353	
	-3/1	1106	660	1766	420	314	23	210	250	18	361	353	
	-3	1106	660	1766	420	314	23	210	250	18	386	378	
	-4/2	1266	694	1960	470	335	23	210	250	18	462	454	
	-4/1	1266	694	1960	470	335	23	210	250	18	462	454	
	-4	1316	780	2096	510	370	23	210	250	18	562	554	
	-5/2	1476	780	2256	510	370	23	210	250	18	575	567	
	-5/1	1476	831	2307	547	407	23	210	250	18	695	687	
	-5	1476	831	2307	547	407	23	210	250	18	695	687	
	-6/2	1656	831	2487	547	407	29	220	270	26	710	702	
	-6/1	1656	831	2487	547	407	29	220	270	26	710	702	
	-6	1656	831	2487	547	407	29	220	270	26	710	702	

Installation sketch



Flange (DN 125mm) PN16

Performance Curve:



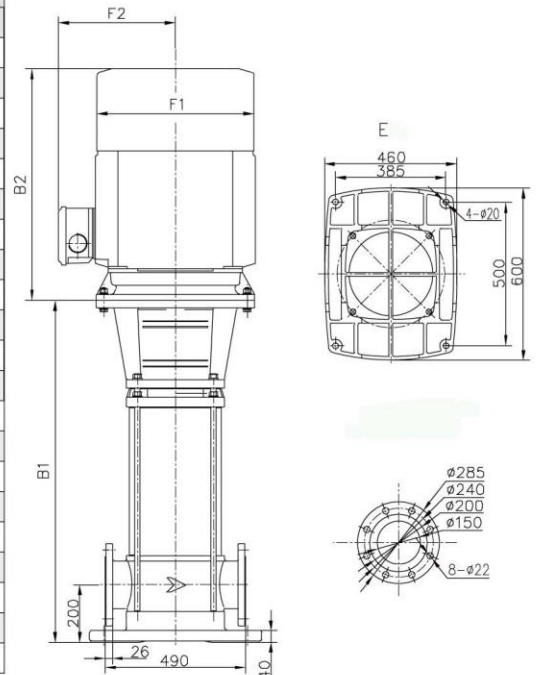
Performance data

Pump model		motor kW	flow m ³ /h	100	120	140	160	180	200	220	240	260
CF200	-1/B	18.5	head m	26.5	26	24.5	23.5	22	20	18	15.5	12.5
	-1/A	22		30	29.5	28.5	27	25.5	24	22	19.5	17
	-1	30		39	38.5	37.5	36.5	35.5	34	32	30	27
	-2/2B	37		54	53	50	47.5	44.5	40.5	36.5	31.5	25.5
	-2/A-B	45		58	56	54	52	48.5	44.5	40.5	35.5	30.5
	-2/2A	45		62	60	58	55	52	48.5	44.5	40	35
	-2/B	45		67	65	63	61	58	55	51	46	40.5
	-2/A	55		70	69	67	65	62	59	55	50	45
	-2	55		79	78	76	74	72	69	65	60	55
	-3/2B	75		95	92	89	85	81	75	69	62	54
	-3/A-B	75		98	96	93	89	85	79	73	66	58
	-3/2A	75		102	99	96	93	89	83	77	71	63
	-3/B	75		107	105	102	99	94	89	84	76	68
	-3/A	75		111	108	106	102	98	93	88	81	73
	-3	90		119	117	115	112	108	103	98	91	83
	-4/2B	90		134	131	127	123	117	110	102	92	81
	-4/A-B	90		138	135	131	126	121	114	106	97	86
	-4/2A	110		142	139	135	130	125	118	110	101	91
	-4/B	110		147	144	140	136	131	124	116	107	96
	-4/A	110		150	148	144	140	134	128	120	111	100
-4	110	159	157	153	149	144	138	131	121	110		

Dimension and weight

Pump model	Dimension mm					weight kg	
	B1	B2	B1+B2	F1	F2	DBL	DBLT
CF200	-1/B	855	560	1415	330	261	323
	-1/A	855	590	1445	380	280	359
	-1	855	660	1515	420	314	415
	-2/2B	1049	660	1709	420	314	459
	-2/A-B	1049	694	1743	470	335	516
	-2/2A	1049	694	1743	470	335	516
	-2/B	1049	694	1743	470	335	516
	-2/A	1099	780	1879	510	370	607
	-2	1099	780	1879	510	370	607
	-3/2B	1293	831	2124	547	407	760
	-3/A-B	1293	831	2124	547	407	760
	-3/2A	1293	831	2124	547	407	760
	-3/B	1293	831	2124	547	407	760
	-3/A	1293	831	2124	547	407	760
	-3	1293	882	2175	547	407	829
	-4/2B	1487	882	2369	547	407	842
	-4/A-B	1487	882	2369	547	407	842
	-4/2A	1487	1020	2507	645	530	1192
	-4/B	1487	1020	2507	645	530	1192
	-4/A	1487	1020	2507	645	530	1192
-4	1487	1020	2507	645	530	1192	

Installation sketch



Flange (DN 150mm) PN16

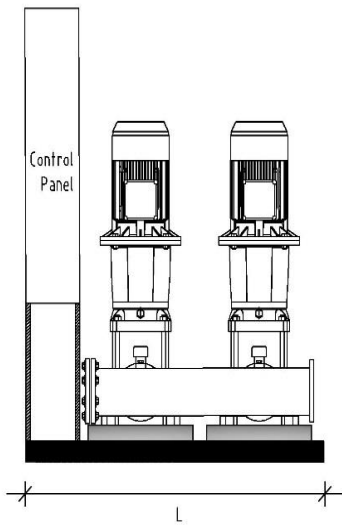
Electric Motor Data

50Hz 3Ph motor										
motor frame No.	power kW	rpm r/min	voltage V	current A	efficiency %	connection type	power factor	insulation class	protection calss	weight kg
71M1-2	0.37	2800	220/380	1.7/1.0	70.0	Δ/Y	0.81	F	IP55	6.8
71M2-2	0.55	2800	220/380	2.4/1.4	73.0	Δ/Y	0.82	F	IP55	9.0
80M1-2	0.75	2830	220/380	3.2/1.8	75.0	Δ/Y	0.83	F	IP55	9.3
80M2-2	1.1	2830	220/380	4.5/2.6	76.2	Δ/Y	0.84	F	IP55	10.5
90S-2	1.5	2840	220/380	5.9/3.5	78.5	Δ/Y	0.84	F	IP55	15.5
90L-2	2.2	2840	220/380	8.4/4.9	81.0	Δ/Y	0.85	F	IP55	18.2
100L-2	3	2870	220/380	11/6.3	82.6	Δ/Y	0.87	F	IP55	24.5
112M-2	4	2900	380	8.2	84.2	Δ	0.88	F	IP55	30.0
132S1-2	5.5	2900	380	11	85.7	Δ	0.88	F	IP55	44.5
132S2-2	7.5	2900	380	15	87.0	Δ	0.88	F	IP55	48.5
160M1-2	11	2930	380	21	88.4	Δ	0.89	F	IP55	105
160M2-2	15	2930	380	29	89.4	Δ	0.89	F	IP55	115
160L-2	18.5	2930	380	35	90.0	Δ	0.90	F	IP55	135
180M-2	22	2940	380	41	90.5	Δ	0.90	F	IP55	171
200L1-2	30	2950	380	55	91.4	Δ	0.90	F	IP55	222
200L2-2	37	2950	380	68	92.0	Δ	0.90	F	IP55	245
225M-2	45	2960	380	82	92.5	Δ	0.90	F	IP55	296
250M-2	55	2965	380	100	93.0	Δ	0.90	F	IP55	375
280S-2	75	2965	380	134	93.6	Δ	0.90	F	IP55	498
280M-2	90	2970	380	160	93.6	Δ	0.91	F	IP55	565
315S-2	110	2980	380	195	94.0	Δ	0.91	F	IP55	890

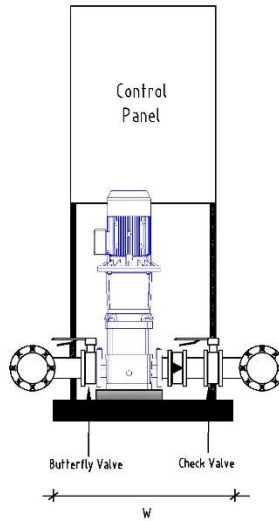
Cold Water Transfer System Variable Speed Drive Booster Pumping System



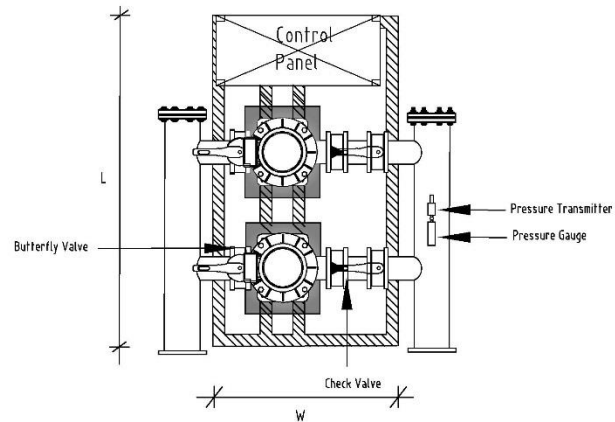
Dimension for Booster Pumping System



Front Elevation



Sectional View



Floor Plan

Model / Dimension	L(mm)	H(mm)	W(mm)	Tank(L)	Suction Manifold(mm)	Discharge Manifold(mm)	Pipe Connection
2 CF3	920	1250	600	8/24	50	50	BSP
2 CF5	920	1250	600	8/24	50	50	BSP
2 CF10	1100	1250	600	18/24	80	80	BSP
2 CF20	1100	1250	700	18/24	80	80	Flange
2 CF32	1280	1250	850	24	100	100	Flange
2 CF45	1280	1250	850	24	100	100	Flange
2 CF64	1280	1250	850	24	150	150	Flange
2 CF90	1450	1250	1000	24	150	150	Flange
2 CF120	1450	1250	1000	24	200	200	Flange
2 CF 150	1650	1500	1150	24	200	200	Flange
2 CF 200	1650	1500	1150	24	250	250	Flange